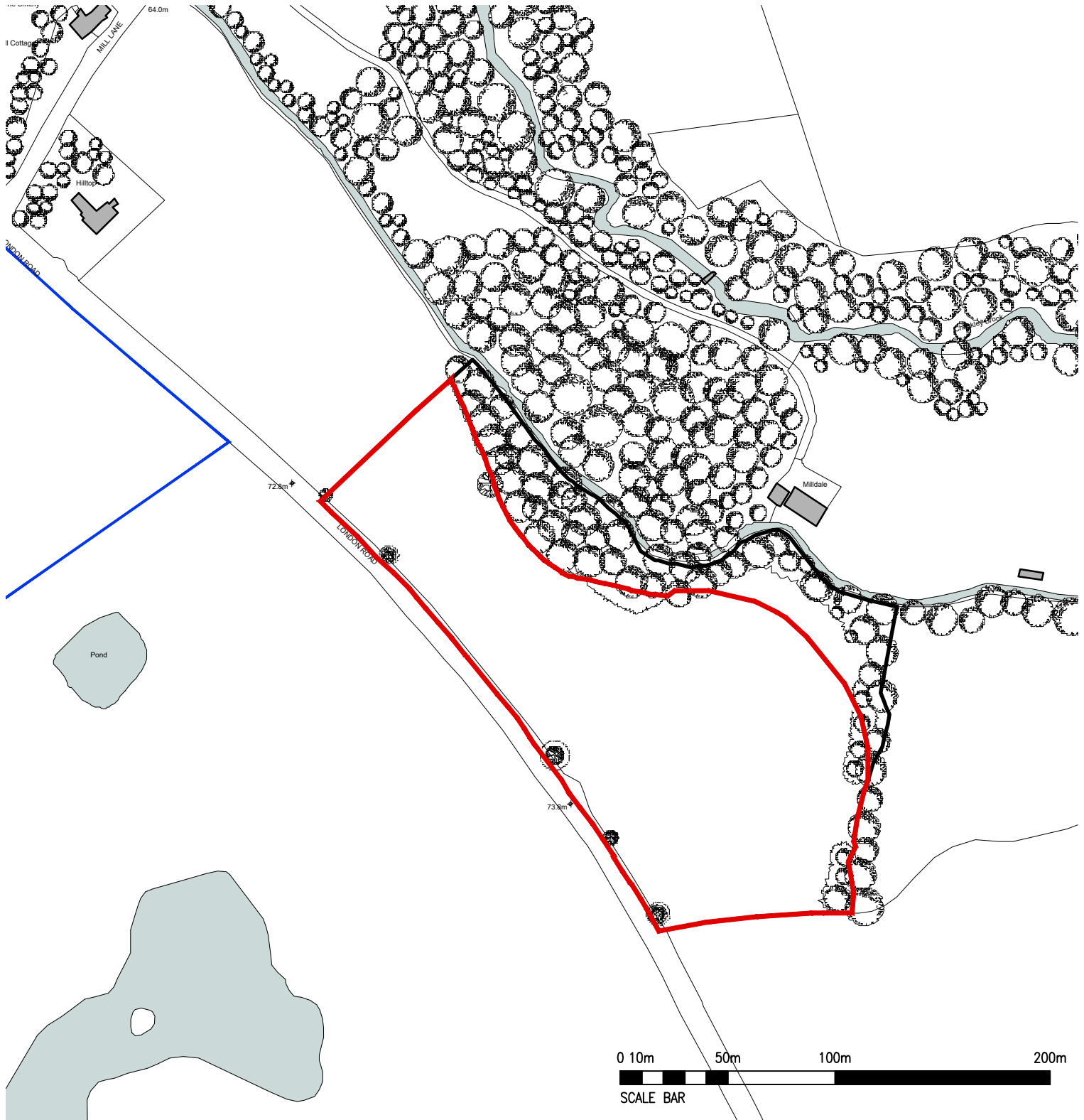
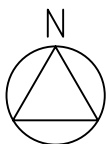


24/1297N

Doddington Estate, Bridgemere
Lane, Bridgemere



Site 1: Site Location_1:2500



					Date: 02/04/2024		Checked by: AV		Sheet Name: Site 1 - Site Location		Project No: 8877		Revision: P1	
					Drawn by: GB		Scale @ A4: 1:2500		Purpose of issue: Planning		Status: ZZ		Drawing No: 8877-BOW-S1-00-DR-A-P002	
					<p>All dimensions to be verified on site, and the Architect informed of any discrepancy. All drawings and specifications should be read in conjunction with the Health and Safety Plan; all conflicts should be reported to the appointed Principal Designer.</p> <p>Do not scale from this drawing.</p> <p>This drawing is the copyright of Bowman Riley Architects Limited. ©</p>					<p>Lady Rona Delves Broughton Doddington Estate Residential Site 1 London Road</p>				
					<div><div><div></div><div></div><div></div></div><div><div>Revision</div><div>Date</div><div>By</div><div>Chk</div></div></div>									
					<div><div><div></div><div></div><div></div></div><div><div></div><div></div><div></div></div></div> <div><div><div></div><div></div><div></div></div><div><div></div><div></div><div></div></div></div> <div><div><div></div><div></div><div></div></div><div><div></div><div></div><div></div></div></div> <div><div><div></div><div></div><div></div></div><div><div></div><div></div><div></div></div></div> <div><div><div></div><div></div><div></div></div><div><div></div><div></div><div></div></div></div> <div><div><div></div><div></div><div></div></div><div><div></div><div></div><div></div></div></div> <div><div><div></div><div></div><div></div></div><div><div></div><div></div><div></div></div></div> <div><div><div></div><div></div><div></div></div><div><div></div><div></div><div></div></div></div> <div><div><div></div><div></div><div></div></div><div><div></div><div></div><div></div></div></div> <div><div><div></div><div></div><div></div></div><div><div></div><div></div><div></div></div></div> <div><div><div></div><div></div><div></div></div><div><div></div><div></div><div></div></div></div> <div><div><div></div><div></div><div></div></div><div><div></div><div></div><div></div></div></div> <div><div><div></div><div></div><div></div></div><div><div></div><div></div><div></div></div></div> <div><div><div></div><div></div><div></div></div><div><div></div><div></div><div></div></div></div> <div><div><div></div><div></div><div></div></div><div><div></div><div></div><div></div></div></div> <div><div><div></div><div></div><div></div></div><div><div></div><div></div><div></div></div></div> <div><div><div></div><div></div><div></div></div><div><div></div><div></div><div></div></div></div> <div><div><div></div><div></div><div></div></div><div><div></div><div></div><div></div></div></div> <div><div><div></div><div></div><div></div></div><div><div></div><div></div><div></div></div></div> <div><div><div></div><div></div><div></div></div><div><div></div><div></div><div></div></div></div> <div><div><div></div><div></div><div></div></div><div><div></div><div></div><div></div></div></div> <div><div><div></div><div></div><div></div></div><div><div></div><div></div><div></div></div></div> <div><div><div></div><div></div><div></div></div><div><div></div><div></div><div></div></div></div> <div><div><div></div><div></div><div></div></div><div><div></div><div></div><div></div></div></div> <div><div><div></div><div></div><div></div></div><div><div></div><div></div><div></div></div></div> <div><div><div></div><div></div><div></div></div><div><div></div><div></div><div></div></div></div> <div><div><div></div><div></div><div></div></div><div><div></div><div></div><div></div></div></div> <div><div><div></div><div></div><div></div></div><div><div></div><div></div><div></div></div></div> <div><div><div></div><div></div><div></div></div><div><div></div><div></div><div></div></div></div> <div><div><div></div><div></div><div></div></div><div><div></div><div></div><div></div></div></div> <div><div><div></div><div></div><div></div></div><div><div></div><div></div><div></div></div></div> <div><div><div></div><div></div><div></div></div><div><div></div><div></div><div></div></div></div> <div><div><div></div><div></div><div></div></div><div><div></div><div></div><div></div></div></div> <div><div><div></div><div></div><div></div></div><div><div></div><div></div><div></div></div></div> <div><div><div></div><div></div><div></div></div><div><div></div><div></div><div></div></div></div> <div><div><div></div><div></div><div></div></div><div><div></div><div></div><div></div></div></div> <div><div><div></div><div></div><div></div></div><div><div></div><div></div><div></div></div></div> <div><div><div></div><div></div><div></div></div><div><div></div><div></div><div></div></div></div> <div><div><div></div><div></div><div></div></div><div><div></div><div></div><div></div></div></div> <div><div><div></div><div></div><div></div></div><div><div></div><div></div><div></div></div></div> <div><div><div></div><div></div><div></div></div><div><div></div><div></div><div></div></div></div> <div><div><div></div><div></div><div></div></div><div><div></div><div></div><div></div></div></div> <div><div><div></div><div></div><div></div></div><div><div></div><div></div><div></div></div></div> <div><div><div></div><div></div><div></div></div><div><div></div><div></div><div></div></div></div> <div><div><div></div><div></div><div></div></div><div><div></div><div></div><div></div></div></div> <div><div><div></div><div></div><div></div></div><div><div></div><div></div><div></div></div></div> <div><div><div></div><div></div><div></div></div><div><div></div><div></div><div></div></div></div> <div><div><div></div><div></div><div></div></div><div><div></div><div></div><div></div></div></div> <div><div><div></div><div></div><div></div></div><div><div></div><div></div><div></div></div></div> <div><div><div></div><div></div><div></div></div><div><div></div><div></div><div></div></div></div> <div><div><div></div><div></div><div></div></div><div><div></div><div></div><div></div></div></div> <div><div><div></div><div></div><div></div></div><div><div></div><div></div><div></div></div></div> <div><div><div></div><div></div><div></div></div><div><div></div><div></div><div></div></div></div> <div><div><div></div><div></div><div></div></div><div><div></div><div></div><div></div></div></div> <div><div><div></div><div></div><div></div></div><div><div></div><div></div><div></div></div></div> <div><div><div></div><div></div><div></div></div><div><div></div><div></div><div></div></div></div> <div><div><div></div><div></div><div></div></div><div><div></div><div></div><div></div></div></div> <div><div><div></div><div></div><div></div></div><div><div></div><div></div><div></div></div></div> <div><div><div></div><div></div><div></div></div><div><div></div><div></div><div></div></div></div> <div><div><div></div><div></div><div></div></div><div><div></div><div></div><div></div></div></div> <div><div><div></div><div></div><div></div></div><div><div></div><div></div><div></div></div></div> <div><div><div></div><div></div><div></div></div><div><div></div><div></div><div></div></div></div> <div><div><div></div><div></div><div></div></div><div><div></div><div></div><div></div></div></div> <div><div><div></div><div></div><div></div></div><div><div></div><div></div><div></div></div></div> <div><div><div></div><div></div><div></div></div><div><div></div><div></div><div></div></div></div> <div><div><div></div><div></div><div></div></div><div><div></div><div></div><div></div></div></div> <div><div><div></div><div></div><div></div></div><div><div></div><div></div><div></div></div></div> <div><div><div></div><div></div><div></div></div><div><div></div><div></div><div></div></div></div> <div><div><div></div><div></div><div></div></div><div><div></div><div></div><div></div></div></div> <div><div><div></div><div></div><div></div></div><div><div></div><div></div><div></div></div></div> <div><div><div></div><div></div><div></div></div><div><div></div><div></div><div></div></div></div> <div><div><div></div><div></div><div></div></div><div><div></div><div></div><div></div></div></div> <div><div><div></div><div></div><div></div></div><div><div></div><div></div><div></div></div></div> <div><div><div></div><div></div><div></div></div><div><div></div><div></div><div></div></div></div> <div><div><div></div><div></div><div></div></div><div><div></div><div></div><div></div></div></div> <div><div><div></div><div></div><div></div></div><div><div></div><div></div><div></div></div></div> <div><div><div></div><div></div><div></div></div><div><div></div><div></div><div></div></div></div> <div><div><div></div><div></div><div></div></div><div><div></div><div></div><div></div></div></div> <div><div><div></div><div></div><div></div></div><div><div></div><div></div><div></div></div></div> <div><div><div></div><div></div><div></div></div><div><div></div><div></div><div></div></div></div> <div><div><div></div><div></div><div></div></div><div><div></div><div></div><div></div></div></div> <div><div><div></div><div></div><div></div></div><div><div></div><div></div><div></div></div></div> <div><div><div></div><div></div><div></div></div><div><div></div><div></div><div></div></div></div> <div><div><div></div><div></div><div></div></div><div><div></div><div></div><div></div></div></div> <div><div><div></div><div></div><div></div></div><div><div></div><div></div><div></div></div></div> <div><div><div></div><div></div><div></div></div><div><div></div><div></div><div></div></div></div> <div><div><div></div><div></div><div></div></div><div><div></div><div></div><div></div></div></div> <div><div><div></div><div></div><div></div></div><div><div></div><div></div><div></div></div></div> <div><div><div></div><div></div><div></div></div><div><div></div><div></div><div></div></div></div> <div><div><div></div><div></div><div></div></div><div><div></div><div></div><div></div></div></div> <div><div><div></div><div></div><div></div></div><div><div></div><div></div><div></div></div></div> <div><div><div></div><div></div><div></div></div><div><div></div><div></div><div></div></div></div> <div><div><div></div><div></div><div></div></div><div><div></div><div></div><div></div></div></div> <div><div><div></div><div></div><div></div></div><div><div></div><div></div><div></div></div></div> <div><div><div></div><div></div><div></div></div><div><div></div><div></div><div></div></div></div> <div><div><div></div><div></div><div></div></div><div><div></div><div></div><div></div></div></div> <div><div><div></div><div></div><div></div></div><div><div></div><div></div><div></div></div></div> <div><div><div></div><div></div><div></div></div><div><div></div><div></div><div></div></div></div> <div><div><div></div><div></div><div></div></div><div><div></div><div></div><div></div></div></div> <div><div><div></div><div></div><div></div></div><div><div></div><div></div><div></div></div></div> <div><div><div></div><div></div><div></div></div><div><div></div><div></div><div></div></div></div> <div><div><div></div><div></div><div></div></div><div><div></div><div></div><div></div></div></div> <div><div><div></div><div></div><div></div></div><div><div></div><div></div><div></div></div></div> <div><div><div></div><div></div><div></div></div><div><div></div><div></div><div></div></div></div> <div><div><div></div><div></div><div></div></div><div><div></div><div></div><div></div></div></div> <div><div><div></div><div></div><div></div></div><div><div></div><div></div><div></div></div></div> <div><div><div></div><div></div><div></div></div><div><div></div><div></div><div></div></div></div> <div><div><div></div><div></div><div></div></div><div><div></div><div></div><div></div></div></div> <div><div><div></div><div></div><div></div></div><div><div></div><div></div><div></div></div></div> <div><div><div></div><div></div><div></div></div><div><div></div><div></div><div></div></div></div> <div><div><div></div><div></div><div></div></div><div><div></div><div></div><div></div></div></div> <div><div><div></div><div></div><div></div></div><div><div></div><div></div><div></div></div></div> <div><div><div></div><div></div><div></div></div></div>									

Area Schedule - Site 1		
Name	House Type	Site Plot Area
LEAP	N/A	400 m ²
S1-01	4B-A2	913 m ²
S1-02	4B-A3	700 m ²
S1-03	4B-A3	576 m ²
S1-04	4B-A1	961 m ²
S1-05	4B-A2	1200 m ²
S1-06	5B-A1	1777 m ²
S1-07	5B-A2	2325 m ²
S1-08	5B-A1	2141 m ²
S1-09	5B-A2	2339 m ²
S1-10	4B-A2	1125 m ²
S1-11	4B-A1	1069 m ²
S1-12	4B-A1	817 m ²
S1-13	4B-A3	963 m ²
S1-14	4B-A1	925 m ²
S1-15	4B-A2	921 m ²
S1-16	4B-A1	747 m ²
S1-17	4B-A2	797 m ²
S1-18	4B-A1	943 m ²

House Type Schedule - Site 1	
House Type	
4B-A1	
6	
4B-A2	
5	
4B-A3	
3	
5B-A1	
2	
5B-A2	
2	
N/A	
1	
Grand total: 19	

Proposed Advanced landscaping planting will be installed to strengthen / gap up hedrows along the street frontage

Proposed Advanced landscaping planting will be installed to strengthen / gap up hedrows along the street frontage

Details refer to drawings and specifications prepared by Timberplay Ltd.

BOWMAN RILEY LAYOUT CHANGES

Plot S1-01:
The dwelling and garage have been pushed approximately 1.7m northwest from the approved outline consent to accommodate adjustments to Plot S1-02 for compliance with LEAP play space requirements.

Plot S1-02:
This plot, adjacent to the LEAP play area, has been moved 5.8m back to ensure the required 10m buffer from the play space boundary is achieved.

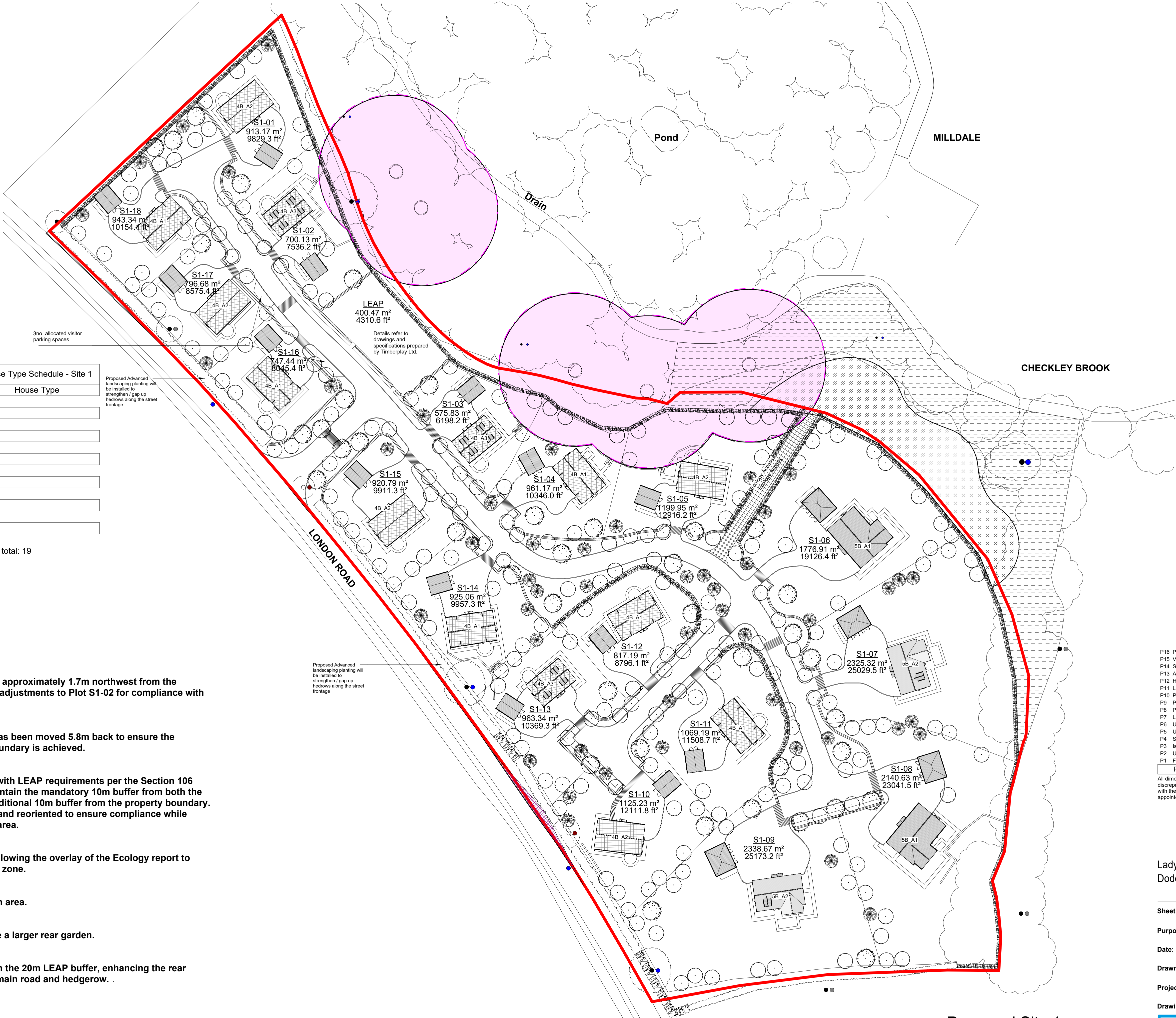
Plot S1-03:
This plot has been repositioned to comply with LEAP requirements per the Section 106 agreement. The property was shifted to maintain the mandatory 10m buffer from both the play area and the dwelling, as well as an additional 10m buffer from the property boundary. The house and garage have been adjusted and reoriented to ensure compliance while enhancing passive supervision of the play area.

Plots S1-04 & S1-05:
Both plots have been shifted 1-2m south following the overlay of the Ecology report to avoid conflicts with the designated ecology zone.

Plot S1-11:
Moved 3m south to increase the rear garden area.

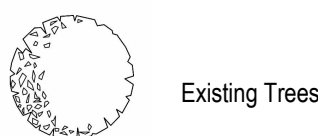
Plot S1-12:
The house has been south by 2m to provide a larger rear garden.

Plot S1-16:
Plot has been moved 2.5m north to maintain the 20m LEAP buffer, enhancing the rear garden while increasing distance from the main road and hedgerow. .



LINE TYPES KEY

- Site Boundary Line
- Plot Boundary Line
- Tree Root Protection Zone
- Rights of Way
- Ecology Zone
- Overhead Cable



Please consult the landscape plans for the positioning of trees and other plantings. The BR drawings provide the proposed tree placements as indicative of the outline consent.

P16 Plot 2 moved out of RPZ zone	22/11/24	MB	TP
P15 Visitor Parking Included	15/11/24	GB	TP
P14 Submitted for Planning	31/10/24	GB	TP
P13 Area Update	01/10/24	GB	TP
P12 House Type Update	27/09/24	GB	TP
P11 Layout Update	20/09/24	GB	TP
P10 Planning Officer Comments	28/08/24	GB	TP
P9 Planning Issue	04/04/24	GB	AV
P8 Planning Issue	03/04/24	GB	AV
P7 Layout Update	22/03/24	GB	AV
P6 Updated to contours	09/02/24	AV	AV
P5 Updated to ecology & flood risk	22/01/24	EA	AV
P4 Site Plot title added & Road name	07/12/23	EA	AV
P3 Issue for Landscape Arch	21/11/23	ND	AV
P2 Update Issue	21/10/23	ND	AV
P1 First Issue	06/10/23	EA	AV

All dimensions to be verified on site, and the Architect informed of any discrepancy. All drawings and specifications should be read in conjunction with the Health and Safety Plan; all conflicts should be reported to the appointed Principal Designer.

Lady Rona Delves Broughton
Doddington Estate Residential

Sheet Name: Proposed Site 1

Purpose of issue: Planning Status:

Date: 02.10.23 Checked by: TP

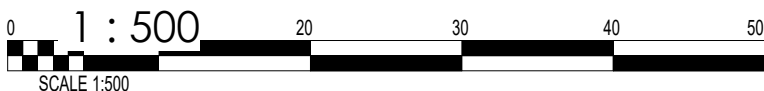
Drawn by: GB Scale @ A1: 1 : 500

Project No: 8877 Revision: P16

Drawing No : 8877-BOW-S1-00-DR-A-P101



Proposed Site 1



● Ground plan, scale 1:200 - - - Falling space according to EN standard



Legend:

Play Equipment

- ① 6.14520 Cradle Nest Special
- ② L2.49000 Tower Combination 49
- ③ 7.83001 Comes Around 1
7.83002 Comes Around 2
- ④ 7.26000 Rotating Disc
- ⑤ L6.82003 Stepping log, h = 0.3m x2
L6.82004 Stepping log, h = 0.4m x2
L6.82005 Stepping log, h = 0.5m
- ⑥ L4.10100 Small Play House
- ⑦ 4.24150 Swinging Horse, with pre-cast foundation
- ⑧ 4.24240 Duck Family

Surfacing and Features

- Wet Pour
- Bark Pit
- Grass
- Grass Matting
- Timber Edging
- Boulder
- Discovery Discs
- Bench
- Bin

A	Submitted	15-11-2024
Rev	Description	Date
Do not scale from this drawing		

timberplay

Project **Doddington LEAP Site 1
BOWMAN RILEY / ASNA
Play Proposals**

Drawing Title **DODDINGTON LEAP SITE 1
General Arrangement Plan**

Scale	Date	Drawn
1:200@A3	15-11-2024	DWM
Quotation Number		Checked
TIMQ21422-01		CR

Important note for customers!
The contractor has to check on site if all conditions (required space existing space etc.) for the installation of the equipment are ensured, also supply pipes (in ground or overhead cables) and other

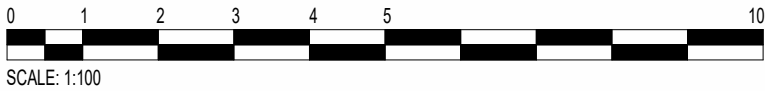
Recommendation for the installation of slides:
Do not install slides with sliding direction between southeast and southwest, because of heating up the material – if it is not possible,

Dimensions:
All dimensions are shown in centimetres unless otherwise stated.

COPYRIGHT:
All rights to the design and equipment lie with Timberplay Ltd. and Richter Spielgeräte GmbH. This drawing is the property of Timberplay Ltd. Copyright is reserved by them and the drawing is issued on the condition that it is not copied, reproduced, retained nor disclosed to any unauthorized person either wholly or in part without the consent of Timberplay.



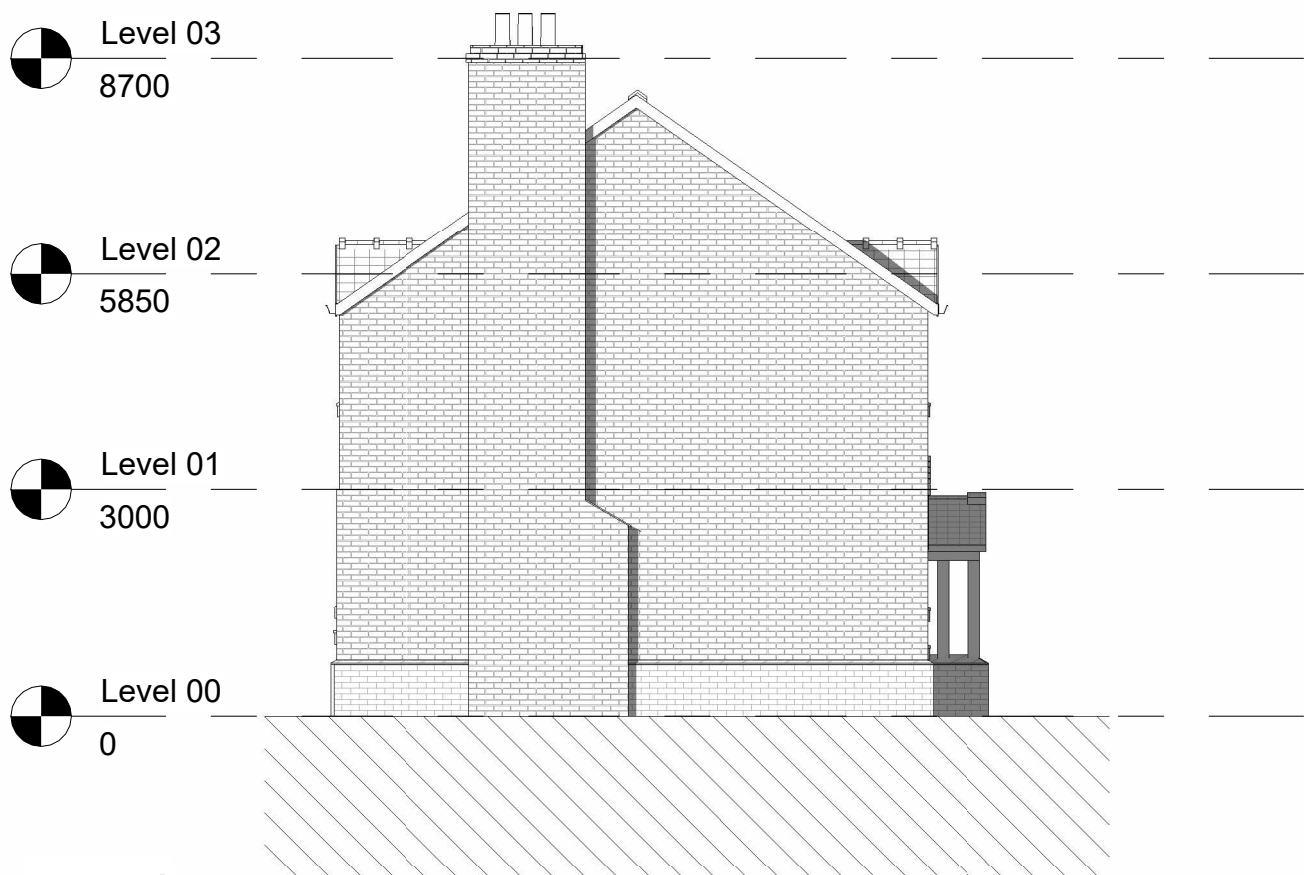
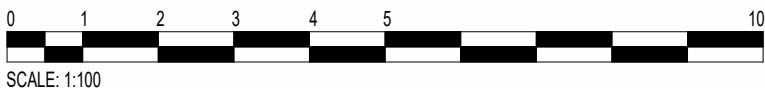
South
1 : 100



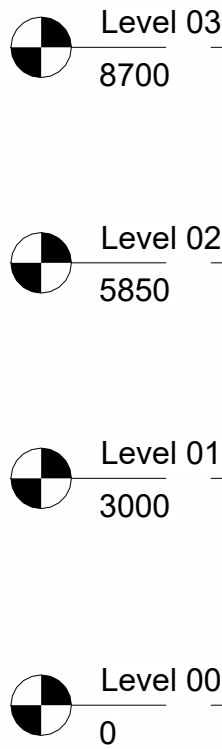
East
1 : 100



North
1 : 100




West
1 : 100



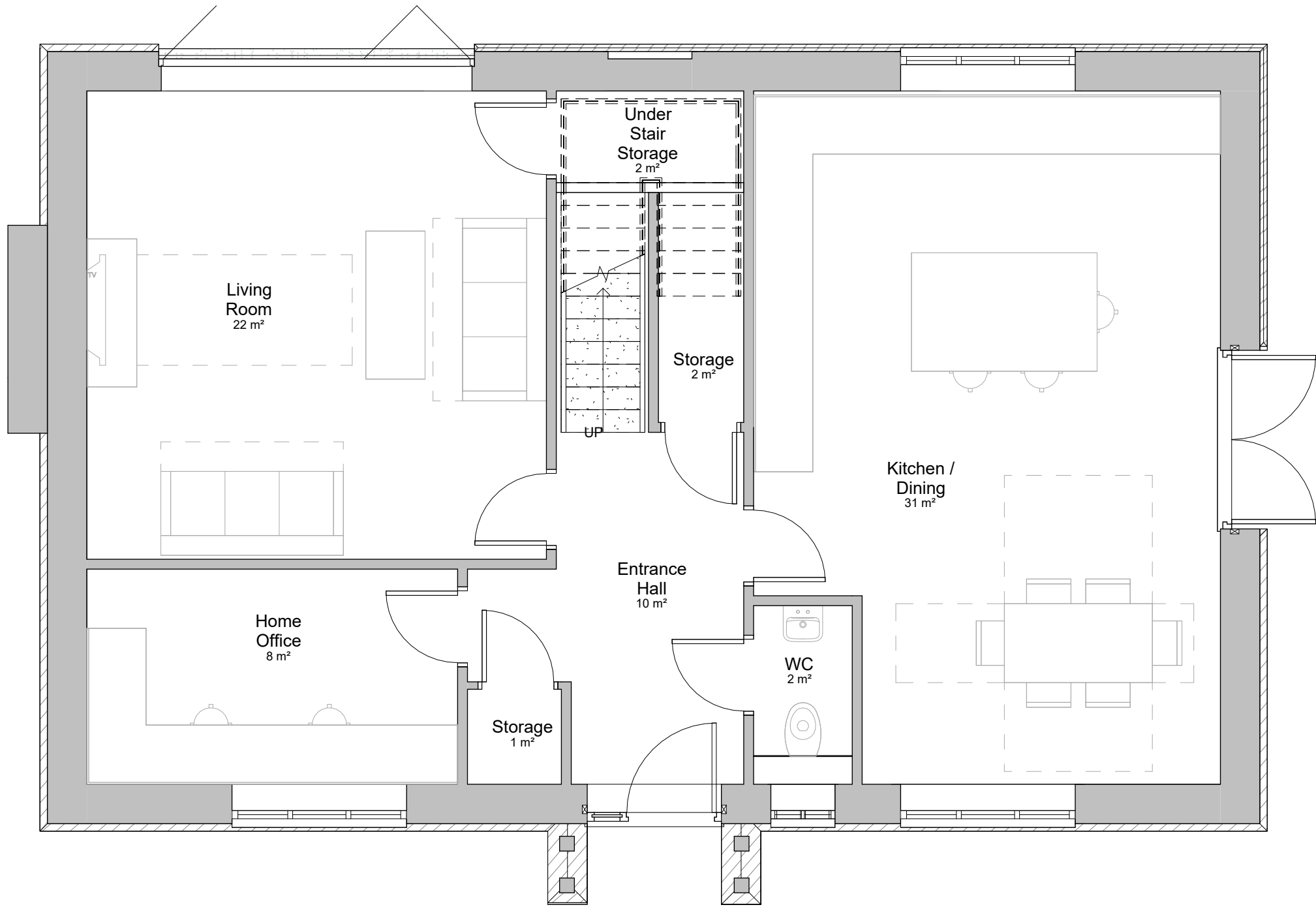
House Type - 4B_A1

Date: 09/11/23				Checked by : TP		Sheet Name: 4B-A1 Proposed Elevations		Project No: 8877		Revision: P5				
P5	Submitted for Planning	31/10/24	GB	TP	Drawn by: GB	Scale @ A2 : 1 : 100	Purpose of issue: Planning	Status:	Drawing No8877-BOW-4BB1-ZZ-DR-A-P300					
P4	GEA Update	01/10/24	GB	TP	All dimensions to be verified on site, and the Architect informed of any discrepancy. All drawings and specifications should be read in conjunction with the Health and Safety Plan; all conflicts should be reported to the appointed Principal Designer.									
P3	Client Issue	26/09/24	GB	TP										
P2	Planning Design Update	19/09/24	GB	TP										
P1	Layout Update	11/09/24	GB	TP	Do not scale from this drawing. This drawing is the copyright of Bowman Riley Architects Limited ©									
Revision		Date	By	Chk	Lady Rona Delves Broughton Doddington Estate Residential									



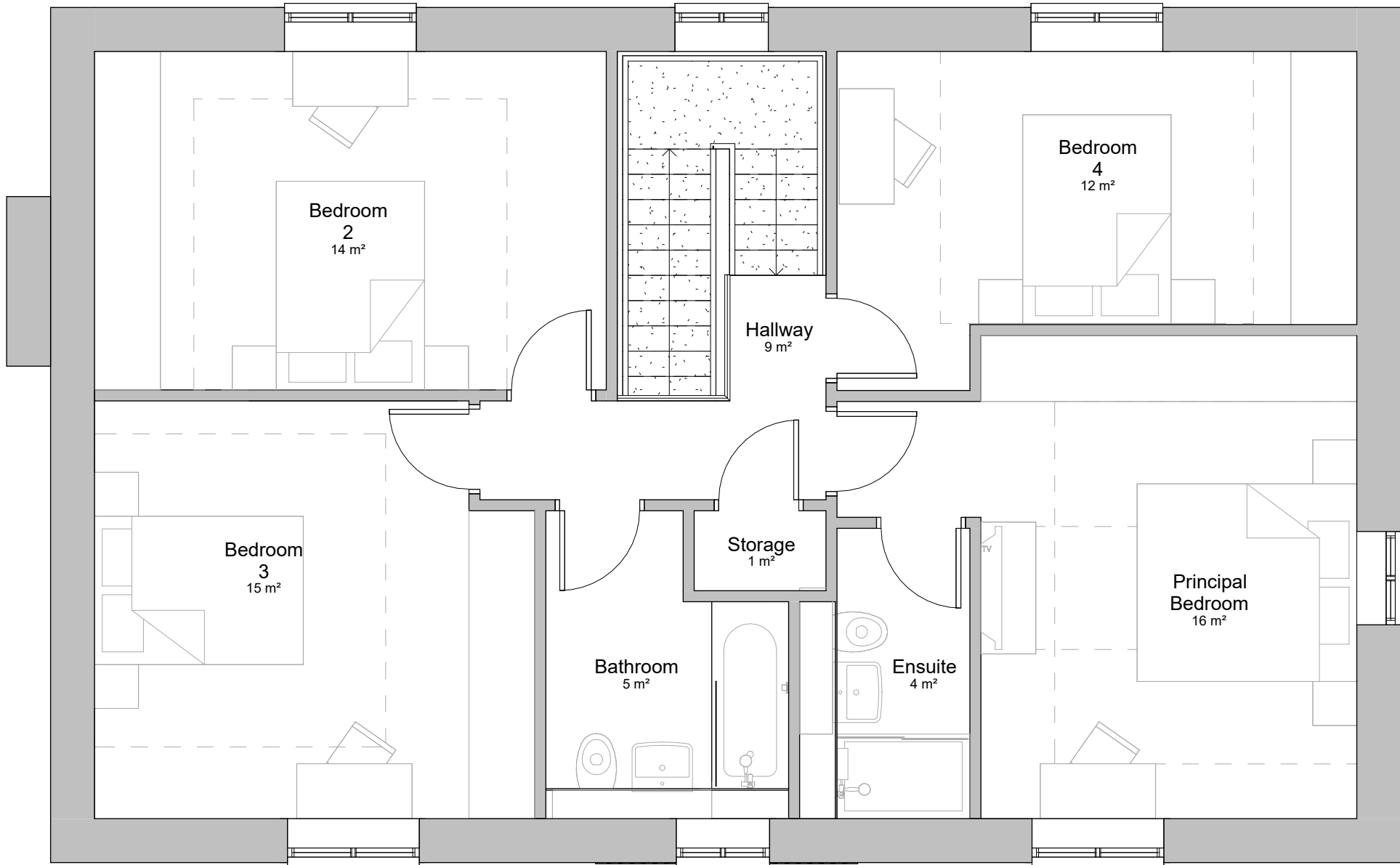
BOWMAN RILEY
ARCHITECTS · BUILDING CONSULTANTS · INTERIORS





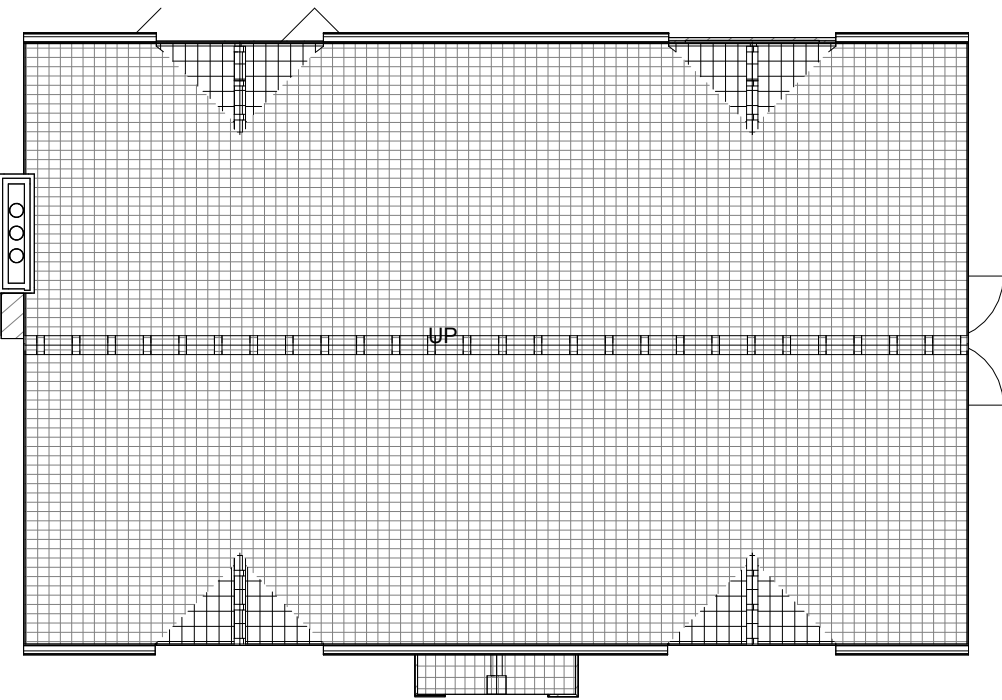
Proposed Ground Floor

1 : 50



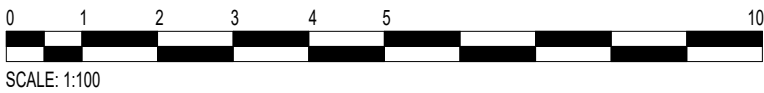
Proposed First Floor

1 : 50



Proposed Roof Plan

1 : 100



Room Schedule	
Name	Area

Kitchen / Dining	31 m²
Entrance Hall	10 m²
Living Room	22 m²
Home Office	8 m²
Storage	1 m²
Storage	2 m²
Under Stair Storage	2 m²
WC	2 m²
Level 00: 8	78 m²

Room Schedule	
Name	Area

Bedroom 4	12 m²
Principal Bedroom	16 m²
Bedroom 3	15 m²
Bedroom 2	14 m²
Bathroom	5 m²
Hallway	9 m²
Storage	1 m²
Ensuite	4 m²
Level 01: 8	77 m²
Grand total: 16	154 m²

House Type - 4B_A1

Area Schedule (GIA)		
Name	Area	Level

GIA Ground Floor	81 m²	Level 00
GIA First Floor	80 m²	Level 01
Grand total: 2	161 m²	

Area Schedule (GEA)		
Name	Area	Level

GEA Ground Floor	100 m²	Level 00
GEA First Floor	100 m²	Level 01
Grand total	200 m²	

P5	Submitted for Planning	31/10/24	GB	TP
P4	GEA Update	01/10/24	GB	TP
P3	Client Issue	26/09/24	GB	TP
P2	Planning Design Update	19/09/24	GB	TP
P1	Layout Update	11/09/24	GB	TP
	Revision	Date	By	Chk

All dimensions to be verified on site, and the Architect informed of any discrepancy. All drawings and specifications should be read in conjunction with the Health and Safety Plan; all conflicts should be reported to the appointed Principal Designer.

Lady Rona Delves Broughton
Doddington Estate Residential

Sheet Name: 4B-A1 Proposed Floor Plans

Purpose of issue: Planning Status:

Date: 09/11/23 Checked by : TP

Drawn by: GB Scale @ A2 : As indicated

Project No: 8877 Revision: P5

Drawing No 8877-BOW-4BB1-ZZ-DR-A-P500



Do not scale from this drawing. This drawing is the copyright of Bowman Riley Architects Limited © C:\Users\grace.butcher\Documents\6077-BOW-4B-A1-01-15-4B_A1_grace butcher\77SQ.rvt



Front View



Side View



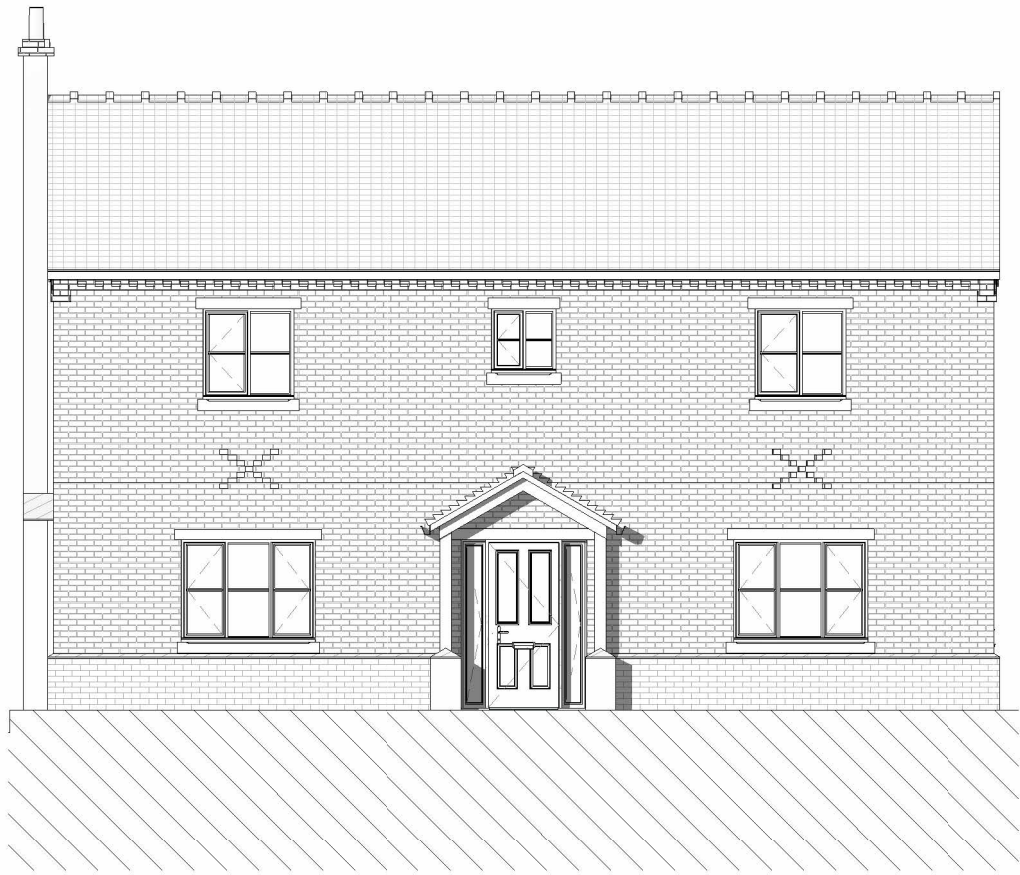
Rear View

House Type - 4B_A1

					Date: 09/11/23	Checked by : TP	Sheet Name: 4B-A1 Proposed Visuals	Project No: 8877	Revision: P5
P5	Submitted for Planning	31/10/24	GB	TP	Drawn by: GB	Scale @ A2 :	Purpose of issue: Planning	Status:	Drawing No8877-BOW-4BB1-ZZ-DR-A-P501
P4	GEA Update	01/10/24	GB	TP	All dimensions to be verified on site, and the Architect informed of any discrepancy. All drawings and specifications should be read in conjunction with the Health and Safety Plan; all conflicts should be reported to the appointed Principal Designer.				
P3	Client Issue	26/09/24	GB	TP					
P2	Planning Design Update	19/09/24	GB	TP					
P1	Layout Update	11/09/24	GB	TP					
	Revision	Date	By	Chk					

Lady Rona Delves Broughton
Doddington Estate Residential

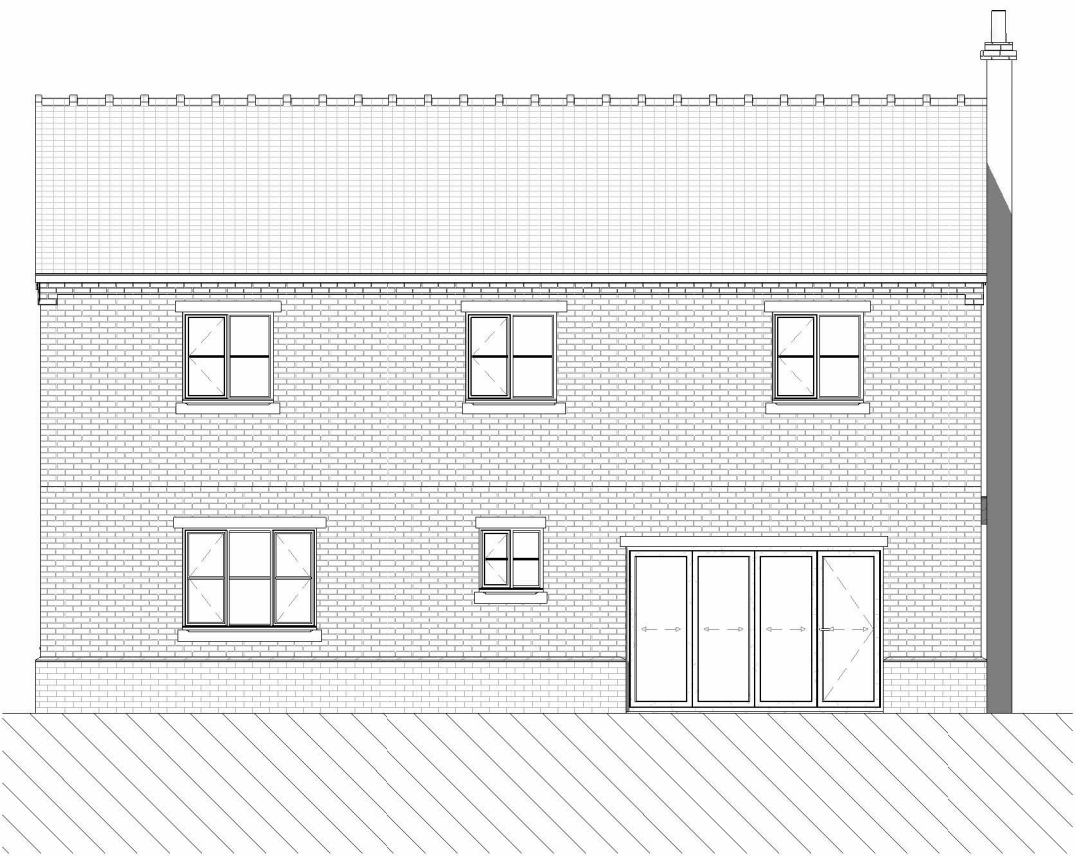
BOWMAN RILEY
ARCHITECTS • BUILDING CONSULTANTS • INTERIORS



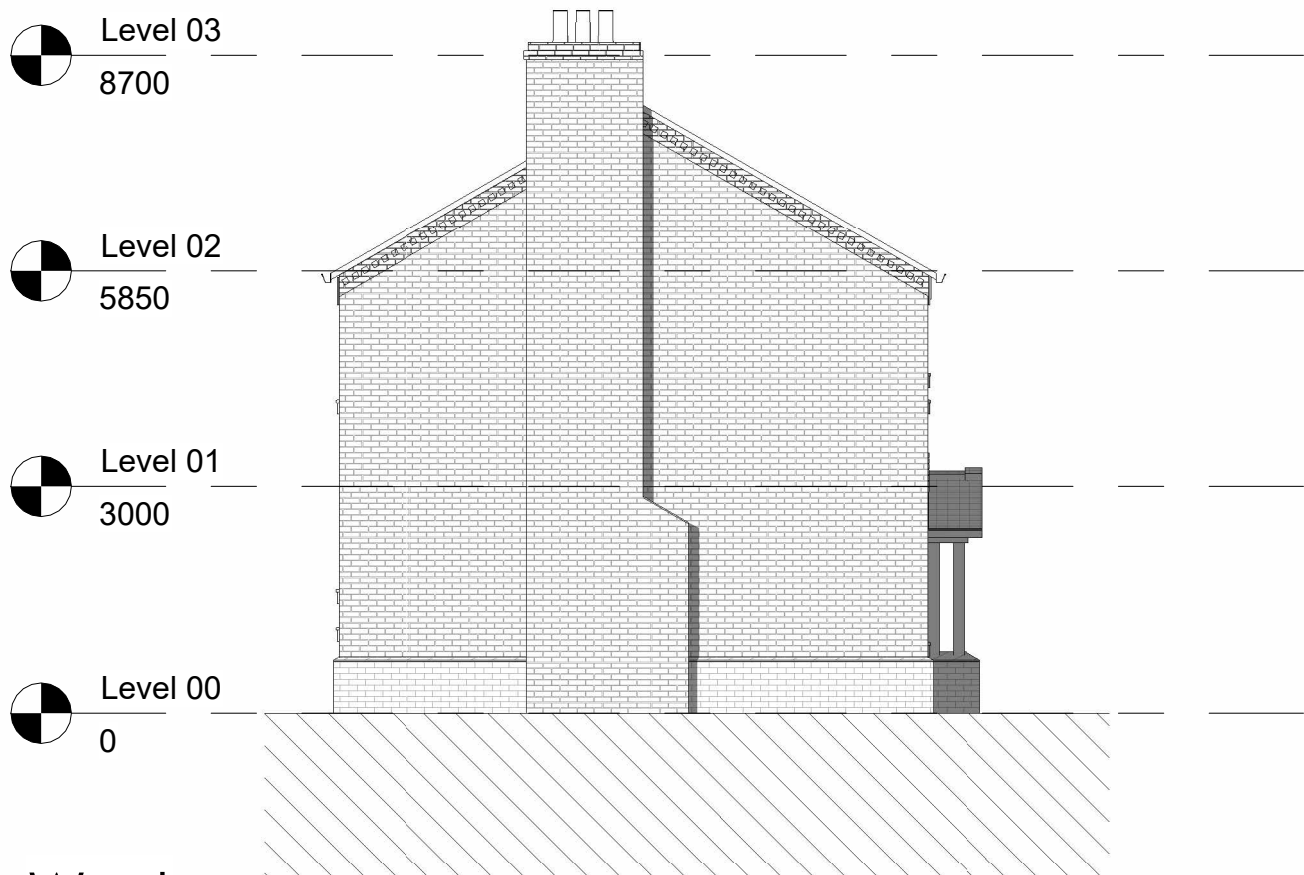
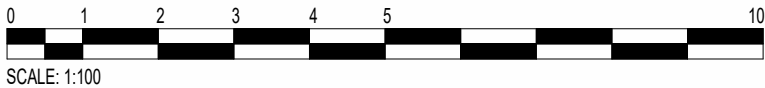
South
1 : 100



East
1 : 100



North
1 : 100



West
1 : 100

Level 03
8700

Level 02
5850

Level 01
3000

Level 00
0

House Type - 4B_A2

P6	Submitted for Planning	31/10/24	GB	TP
P5	GIA Update	01/10/24	GB	TP
P4	Design Update	27/09/24	GB	TP
P3	Client Update	26/09/24	GB	TP
P2	Planning Design Update	19/09/24	GB	TP
P1	Layout Update	11/09/24	GB	TP
Revision	Date	By	Chk	

Date: 09/11/23

Checked by : TP

Drawn by: GB

Scale @ A2 : 1 : 100

All dimensions to be verified on site, and the Architect informed of any discrepancy. All drawings and specifications should be read in conjunction with the Health and Safety Plan; all conflicts should be reported to the appointed Principal Designer.
Do not scale from this drawing.
This drawing is the copyright of Bowman Riley Architects Limited ©

Sheet Name: 4B-A2 Proposed Elevations

Purpose of issue: Planning

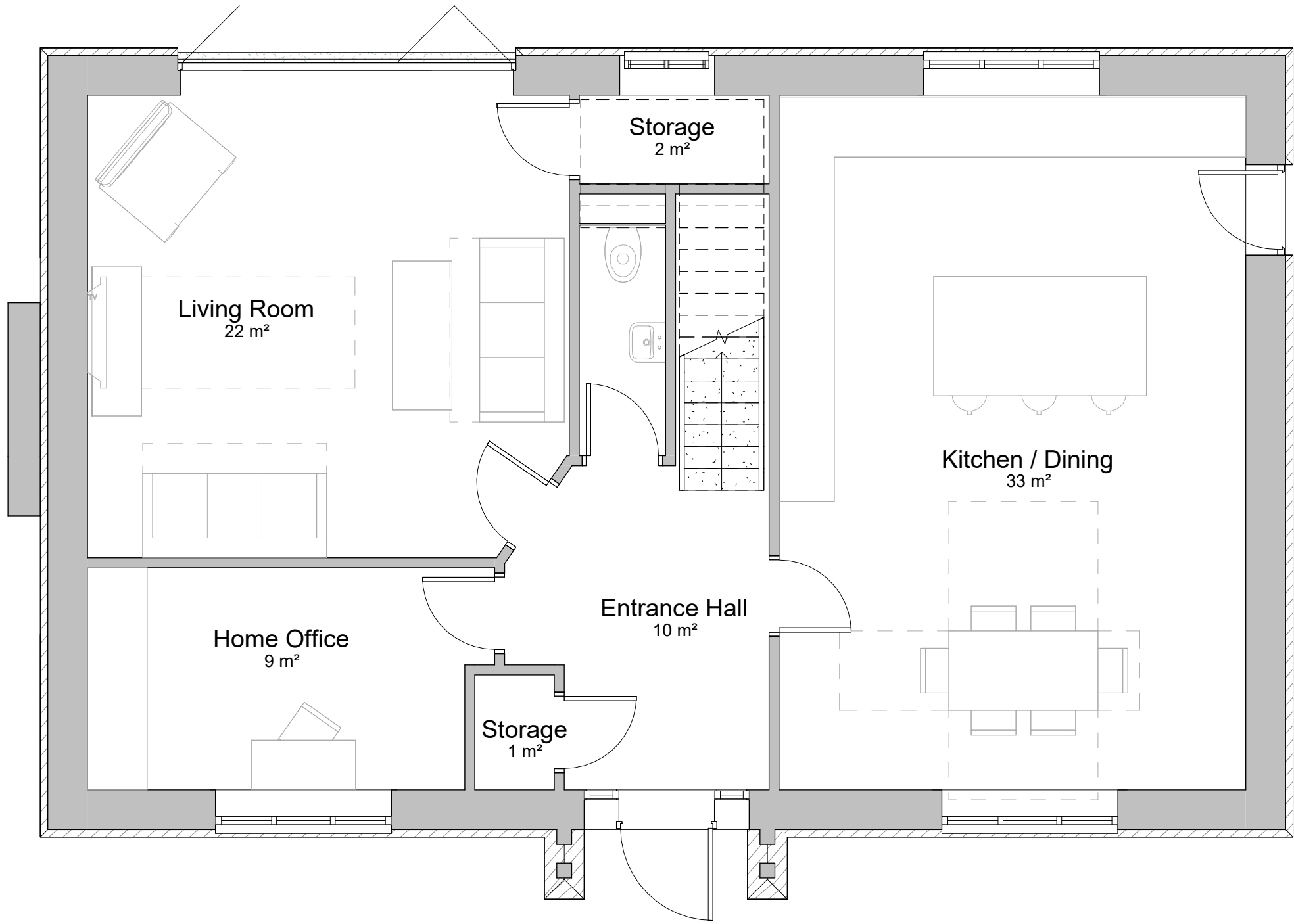
Lady Rona Delves Broughton
Doddington Estate Residential

Project No: 8877

Revision: P6

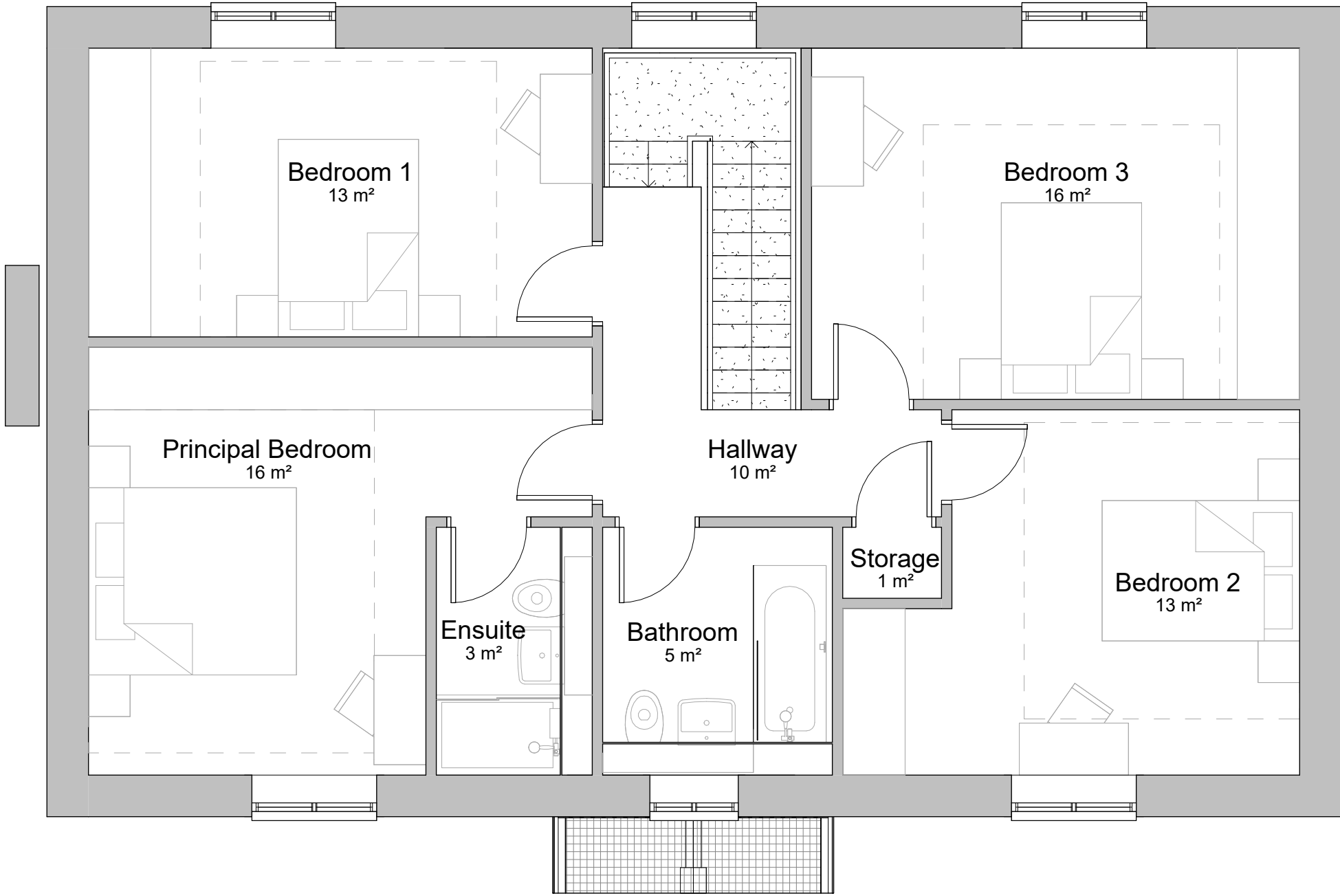
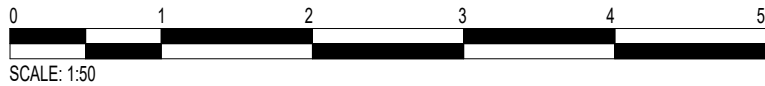
Drawing No8877-BOW-4BB1-ZZ-DR-A-P300





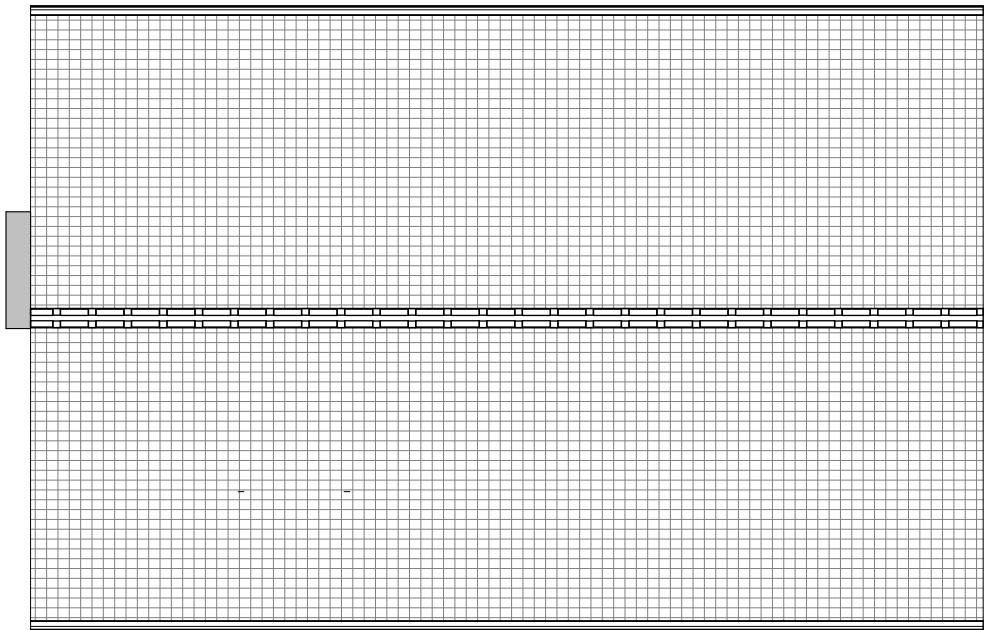
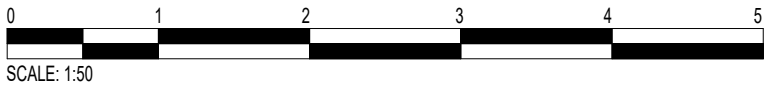
Proposed Ground Floor

1 : 50



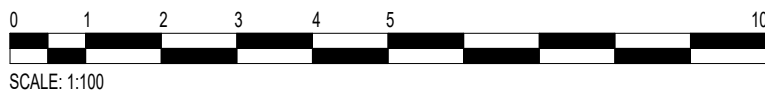
Proposed First Floor

1 : 50



Proposed Roof Plan

1 : 100



Room Schedule	
Name	Area
Kitchen / Dining	33 m ²
Entrance Hall	10 m ²
Storage	1 m ²
Home Office	9 m ²
Living Room	22 m ²
Storage	2 m ²
Level 00: 6	77 m ²

Room Schedule	
Name	Area
Bathroom	5 m ²
Bedroom 2	13 m ²
Bedroom 3	16 m ²
Hallway	10 m ²
Bedroom 1	13 m ²
Principal Bedroom	16 m ²
Storage	1 m ²
Ensuite	3 m ²
Level 01: 8	77 m ²
Grand total	153 m ²

House Type - 4B_A2

Area Schedule (GIA)		
Name	Area	Level
GIA Ground Floor	81 m ²	Level 00
GIA First Floor	81 m ²	Level 01
Grand total: 2	163 m ²	

Area Schedule (GEA)		
Name	Area	Level
GEA Groud Floor	101 m ²	Level 00
GEA 1st Floor	98 m ²	Level 01
Grand total	199 m ²	

P6	Submitted for Planning	31/10/24	GB	TP
P5	GIA Update	01/10/24	GB	TP
P4	Design Update	27/09/24	GB	TP
P3	Client Update	26/09/24	GB	TP
P2	Planning Design Update	19/09/24	GB	TP
P1	Layout Update	11/09/24	GB	TP
	Revision	Date	By	Chk

All dimensions to be verified on site, and the Architect informed of any discrepancy. All drawings and specifications should be read in conjunction with the Health and Safety Plan; all conflicts should be reported to the appointed Principal Designer.

Lady Rona Delves Broughton
Doddington Estate Residential

Sheet Name: 4B-A2 Proposed Floor Plans

Purpose of issue: Planning Status:

Date: 09/11/23 Checked by : TP

Drawn by: GB Scale @ A2 : As indicated

Project No: 8877 Revision: P6

Drawing No8877-BOW-4BB1-ZZ-DR-A-P500



Do not scale from this drawing. This drawing is the copyright of Bowman Riley Architects Limited © C:\Users\grace butcher\Documents\6077-BOW-4B-A2-01-15-4B_A2_grace butcher\77500.rvt



Front View



Side View



Rear View

House Type - 4B_A2

P6 Submitted for Planning				31/10/24	GB	TP	Date: 09/11/23	Checked by : TP	Sheet Name: 4B-A2 Proposed Visuals	Project No: 8877	Revision: P6		
P5 GIA Update				01/10/24	GB	TP							
P4 Design Update				27/09/24	GB	TP							
P3 Client Update				26/09/24	GB	TP							
P2 Planning Design Update				19/09/24	GB	TP							
P1 Layout Update				11/09/24	GB	TP							
Revision				Date	By	Chk	Drawn by: GB		Scale @ A2 :		Purpose of issue: Planning	Status:	Drawing No8877-BOW-4BB1-ZZ-DR-A-P501
Do not scale from this drawing. This drawing is the copyright of Bowman Riley Architects Limited ©													
All dimensions to be verified on site, and the Architect informed of any discrepancy. All drawings and specifications should be read in conjunction with the Health and Safety Plan; all conflicts should be reported to the appointed Principal Designer.													
Lady Rona Delves Broughton													
Doddington Estate Residential													
<div><div>BOWMANRILEY</div><div>ARCHITECTS • BUILDING CONSULTANTS • INTERIORS</div></div>													



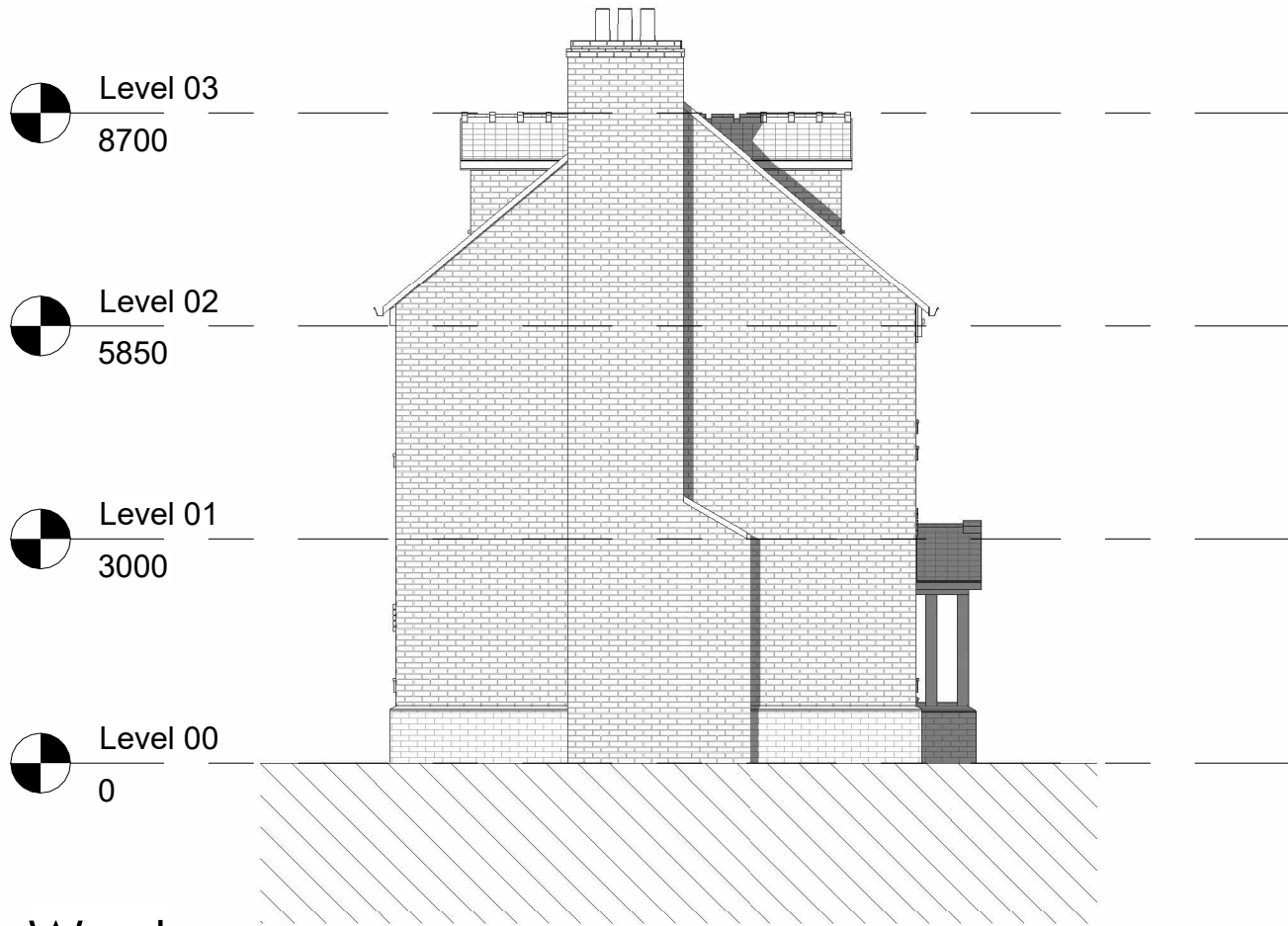
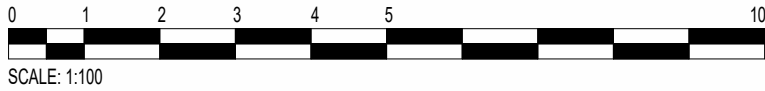
South
1 : 100



East
1 : 100




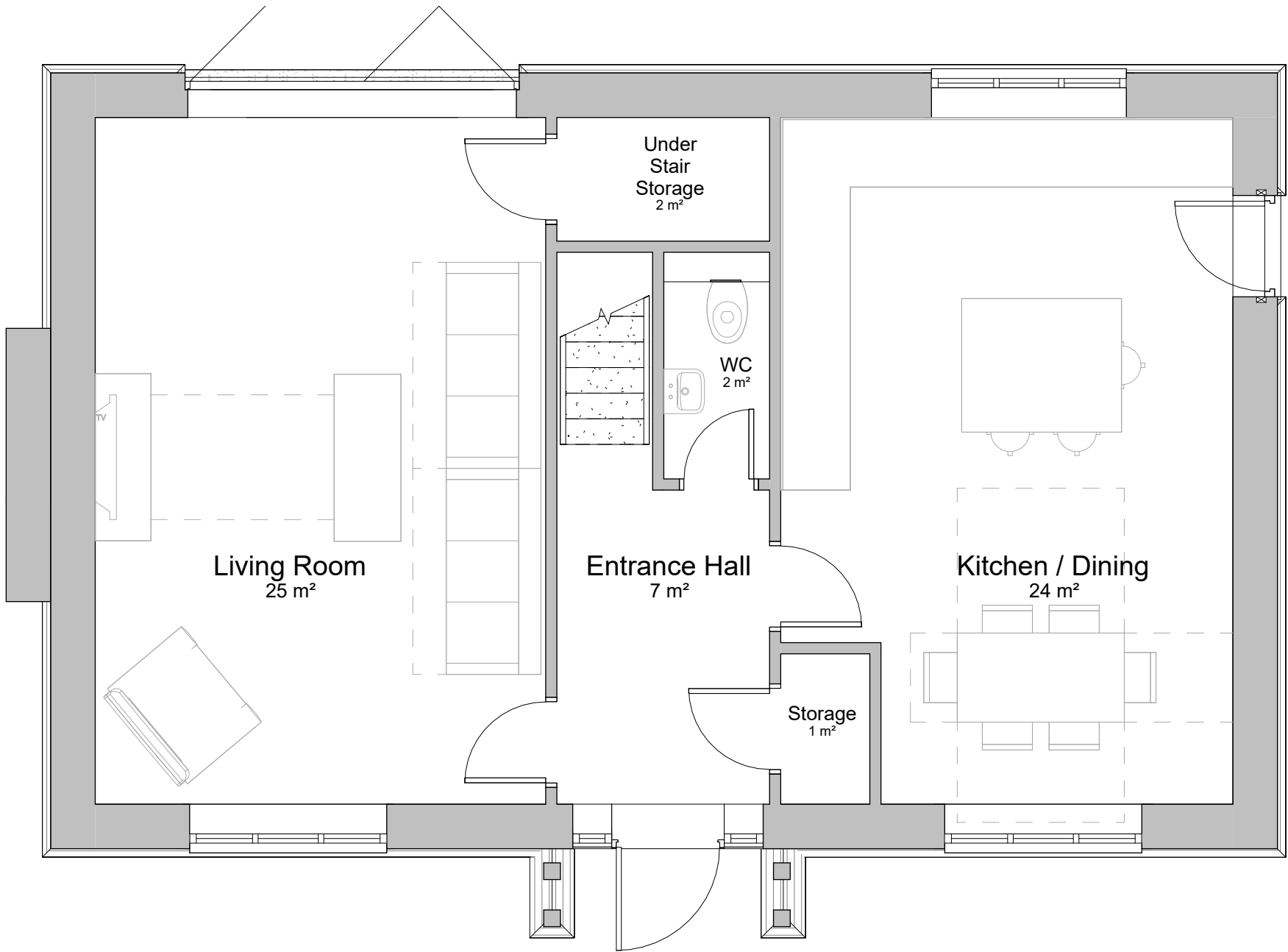
North
1 : 100



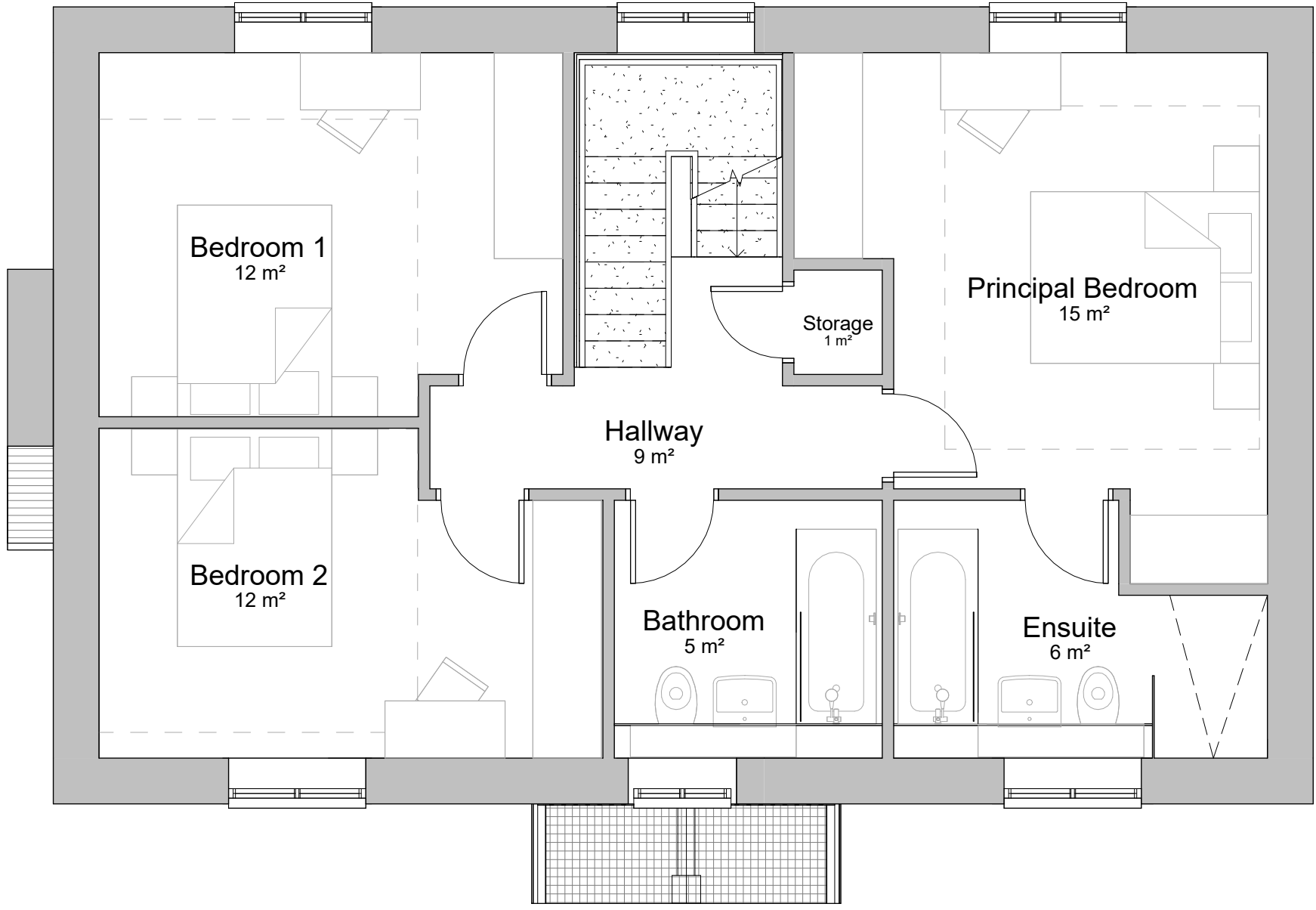
West
1 : 100

House Type - 4B_A3

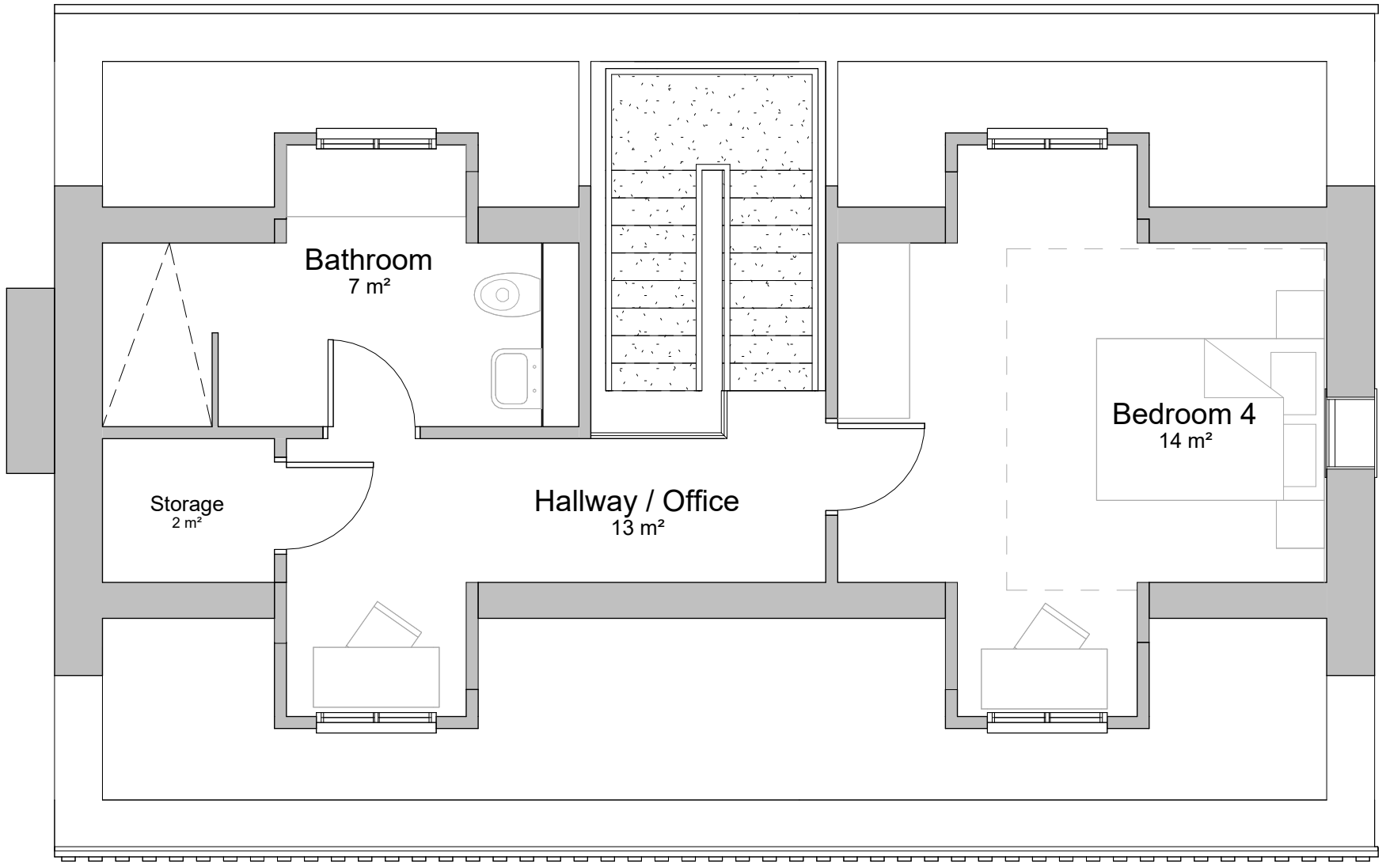
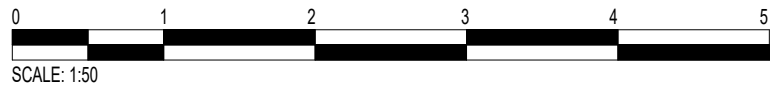
				Date: 9/11/23	Checked by : TP	Sheet Name: 4B-A3 Proposed Elevations	Project No: 8877	Revision: P4
				Drawn by: GB	Scale @ A2 : 1 : 100	Purpose of issue: Planning	Status:	Drawing No 8877-BOW-4BA2-ZZ-DR-A-P300
P4	Submitted for Planning	31/10/24	GB	TP	All dimensions to be verified on site, and the Architect informed of any discrepancy. All drawings and specifications should be read in conjunction with the Health and Safety Plan; all conflicts should be reported to the appointed Principal Designer. Do not scale from this drawing. This drawing is the copyright of Bowman Riley Architects Limited ©	Lady Rona Delves Broughton Doddington Estate Residential		
P3	GEA Update	25/10/24	GB	TP				
P2	Client Update	26/09/24	GB	TP				
P1	House Design & Layout Update	19/09/24	GB	TP				
	Revision	Date	By	Chk	P:\Architectural\Residential\8877 - Doddington Estate Residential\8877 - 07 Revit\Working Models\House Types\NEW External Models\8877-BOW-4B-ZZ-M3-A-0015-4B_A3_N			



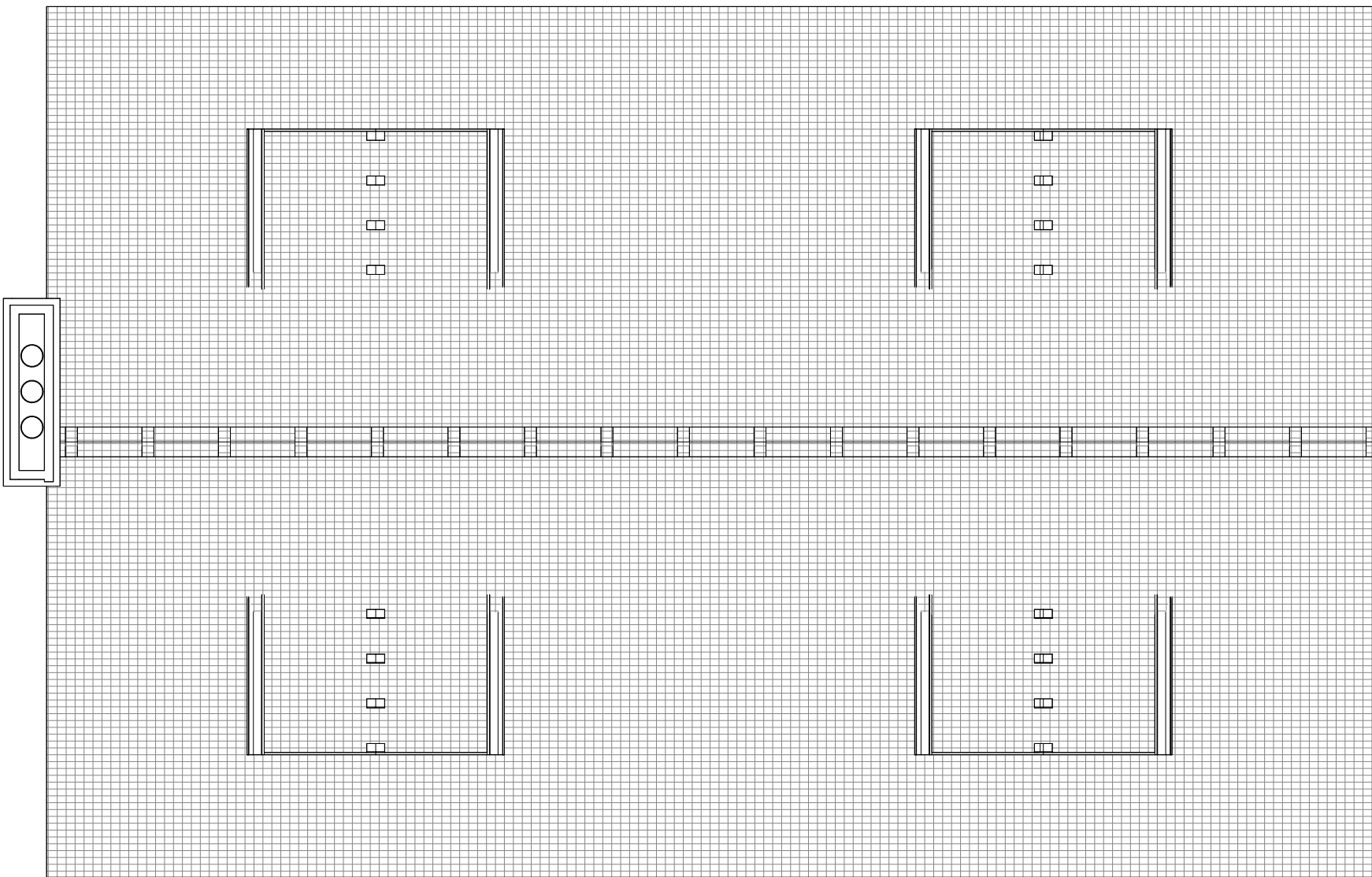
Proposed Ground Floor
1 : 50



Proposed First Floor
1 : 50



Proposed Second Floor
1 : 50



Proposed Roof Plan
1 : 50



House Type - 4B_A3

Area Schedule (Gross Building)		
Name	Area	Level

GIA Ground Floor	63 m²	Level 00
GIA First Floor	63 m²	Level 01
GIA Second Floor	39 m²	Level 02
Grand total: 3	165 m²	

Area Schedule (GEA)		
Name	Area	Level

GEA Ground Floor	78 m²	Level 00
GEA 1st Floor	78 m²	Level 01
GEA 2nd Floor	44 m²	Level 02
Grand total	200 m²	

Room Schedule	
Name	Area

Kitchen / Dining	24 m²
Entrance Hall	7 m²
WC	2 m²
Living Room	25 m²
Storage	1 m²
Under Stair Storage	2 m²
Level 00: 6	61 m²
Principal Bedroom	15 m²
Bedroom 2	12 m²
Bedroom 1	12 m²
Bathroom	5 m²
Hallway	9 m²
Storage	1 m²
Ensuite	6 m²
Level 01: 7	59 m²
Bedroom 4	14 m²
Hallway / Office	13 m²
Bathroom	7 m²
Storage	2 m²
Level 02: 4	36 m²
Grand total: 17	156 m²

P6	Submitted for Planning	31/10/24	GB	TP
P4	GEA Update	25/10/24	GB	TP
P3	Design Update	27/09/24	GB	TP
P2	Client Update	26/09/24	GB	TP
P1	House Design & Layout Update	19/09/24	GB	TP
	Revision	Date	By	Chk

All dimensions to be verified on site, and the Architect informed of any discrepancy. All drawings and specifications should be read in conjunction with the Health and Safety Plan; all conflicts should be reported to the appointed Principal Designer.

Lady Rona Delves Broughton
Doddington Estate Residential

Sheet Name: 4B-A3 Proposed Plans

Purpose of issue: Planning

Status:

Date: 9/11/23

Checked by: TP

Drawn by: GB

Scale @ A1: 1 : 50

Project No: 8877

Revision: P5

Drawing No 8877-BOW-4BA2-ZZ-DR-A-P500



Front View



Front View




Rear View

Note: Landscaping is shown for illustrative purposes to provide context for the house's surroundings

House Type - 4B_A3

Date: 09/11/23				Checked by : TP		Sheet Name: 4B-A3 Proposed Visuals		Project No: 8877		Revision: P5				
P5	Submitted for Planning	31/10/24	GB	TP	Drawn by: GB	Scale @ A2 :	Purpose of issue: Planning	Status:	Drawing No8877-BOW-4BA2-ZZ-DR-A-P501					
P4	GEA Update	25/10/24	GB	TP	All dimensions to be verified on site, and the Architect informed of any discrepancy. All drawings and specifications should be read in conjunction with the Health and Safety Plan; all conflicts should be reported to the appointed Principal Designer. Do not scale from this drawing. This drawing is the copyright of Bowman Riley Architects Limited ©									
P3	Design Update	27/09/24	GB	TP										
P2	Client Update	26/09/24	GB	TP										
P1	House Design & Layout Update	19/09/24	GB	TP										
	Revision	Date	By	Chk	Lady Rona Delves Broughton Doddington Estate Residential									



BOWMANRILEY
ARCHITECTS · BUILDING CONSULTANTS · INTERIORS





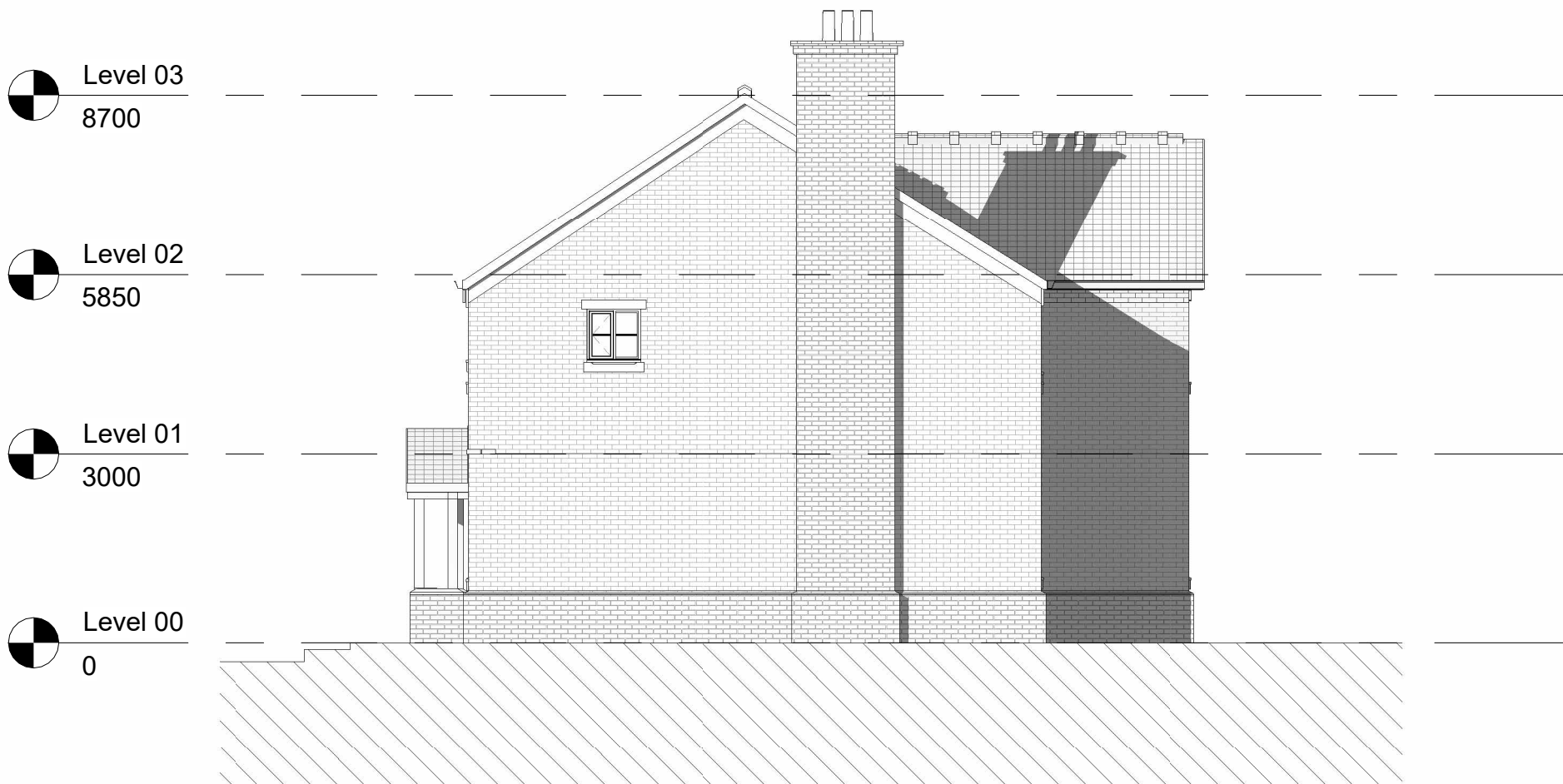
South
1 : 100



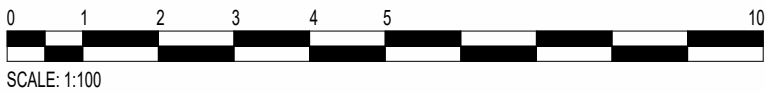
West
1 : 100



North
1 : 100



East
1 : 100



House Type - 5B_A1

P4	Submitted for Planning	31/10/24	GB	TP
P3	GIA Update	01/10/24	GB	TP
P2	Client Issue	26/09/24	GB	TP
P1	Design Update	19/09/24	GB	TP
	Revision	Date	By	Chk

Date: 02/27/24

Checked by : TP

Drawn by: GB

Scale @ A2 : 1 : 100

All dimensions to be verified on site, and the Architect informed of any discrepancy. All drawings and specifications should be read in conjunction with the Health and Safety Plan; all conflicts should be reported to the appointed Principal Designer.
Do not scale from this drawing.
This drawing is the copyright of Bowman Riley Architects Limited ©

Sheet Name: 5B_A1 Proposed Elevations

Purpose of issue: Planning

Lady Rona Delves Broughton
Doddington Estate Residential

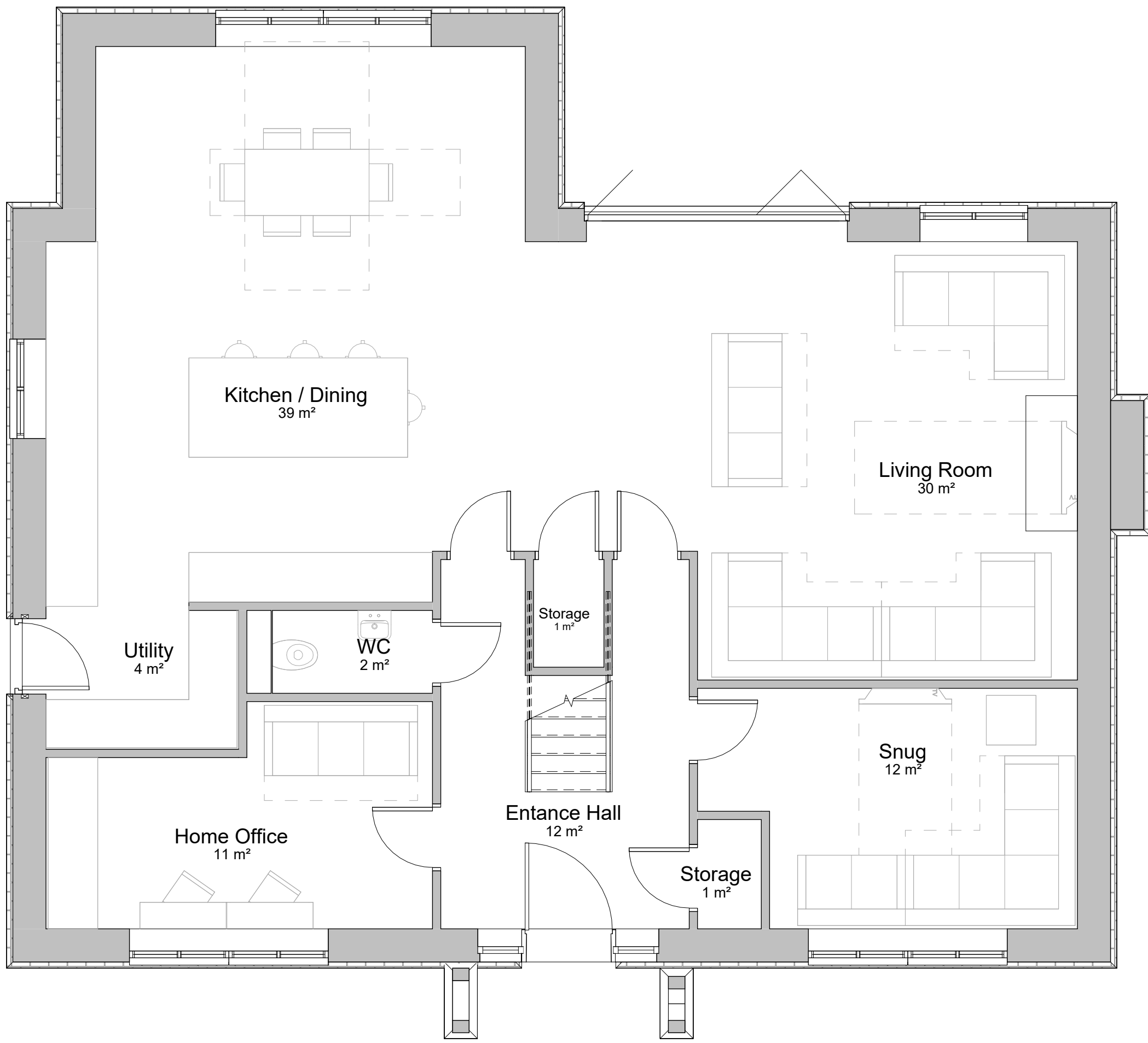
Status:

Project No: 8877

Revision: P4

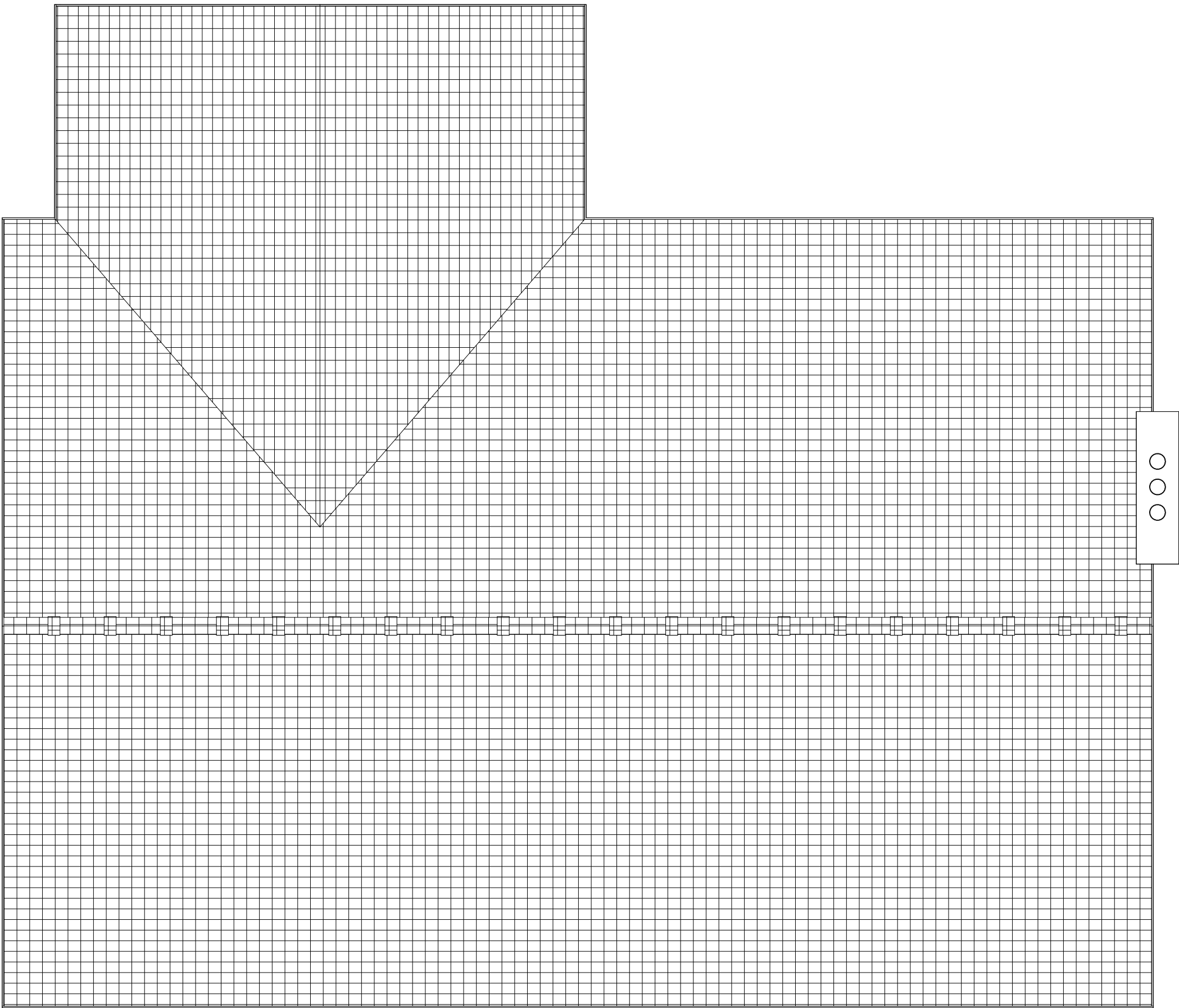
Drawing No: 8877-BOW-5B_A2-ZZ-DR-A-P300





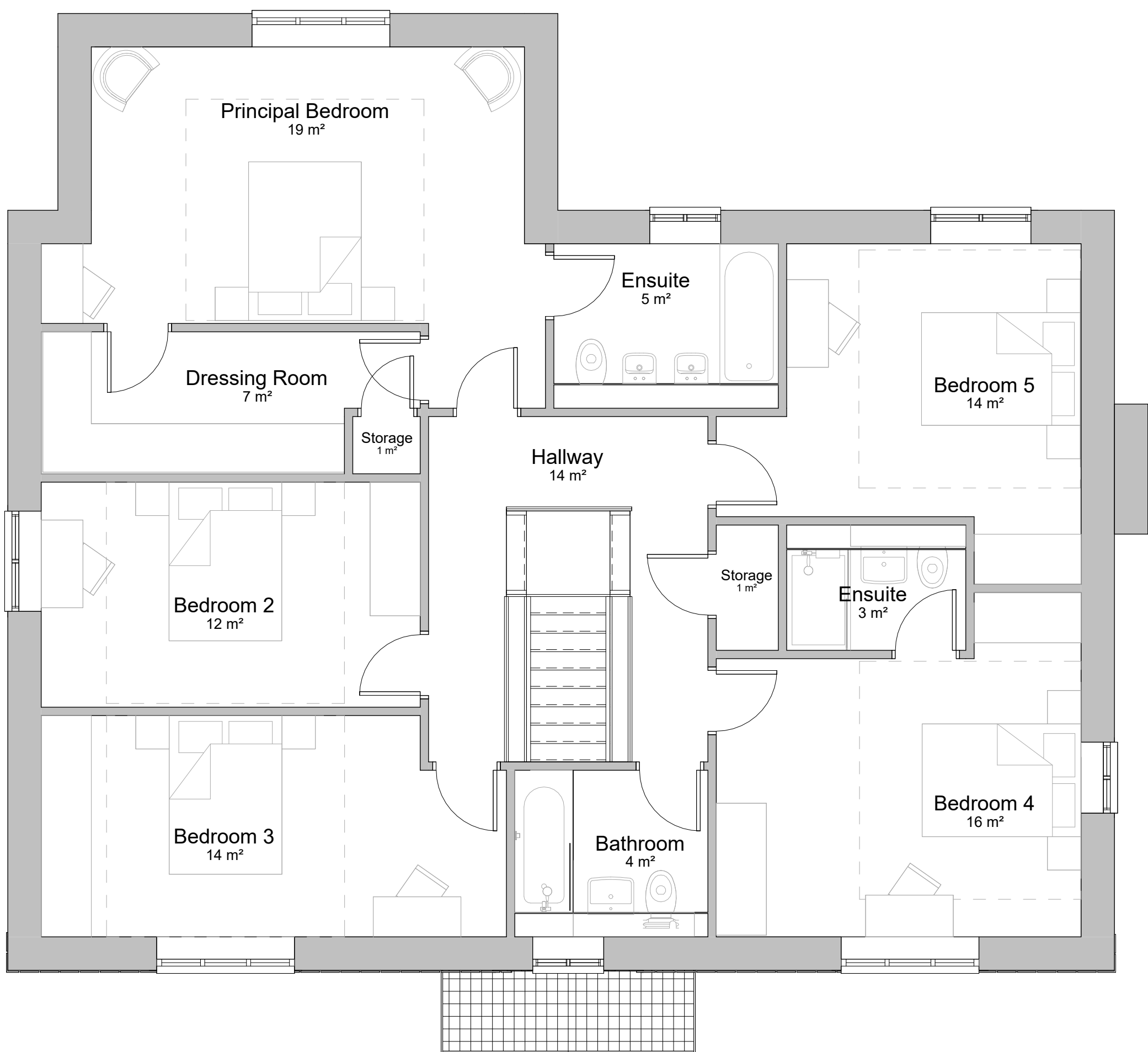
Proposed Ground Floor Plan

1 : 50



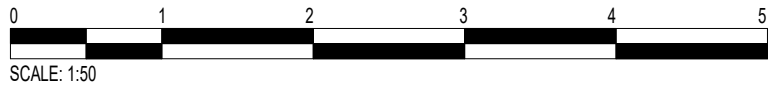
Proposed Roof Plan

1 : 50



Proposed First Floor Plan

1 : 50



Room Schedule	
Name	Area

Kitchen / Dining	39 m²
Living Room	30 m²
Home Office	11 m²
WC	2 m²
Entance Hall	12 m²
Snug	12 m²
Storage	1 m²
Utility	4 m²
Storage	1 m²

Room Schedule	
Name	Area

Level 00: 9	112 m²
Bedroom 5	14 m²
Bedroom 4	16 m²
Bedroom 3	14 m²
Bedroom 2	12 m²
Principal Bedroom	19 m²
Hallway	14 m²
Ensuite	3 m²
Ensuite	5 m²
Dressing Room	7 m²
Storage	1 m²
Bathroom	4 m²
Storage	1 m²
Level 01: 12	108 m²
Grand total: 21	220 m²

Area Schedule (GIA)	
Name	Area

GIA Ground Floor	116 m²
GIA First Floor	116 m²
Grand total: 2	231 m²

Area Schedule (GEA)	
Name	Area

GEA Ground Floor	139 m²
GEA 1st Floor	136 m²
Grand total	275 m²

P6	Submitted for Planning	31/10/24	GB	TP
P4	GIA Update	01/10/24	GB	TP
P3	Client Issue	26/09/24	GB	TP
P2	Design Update	19/09/24	GB	TP
P1	New Laout	11/09/24	GB	TP

Revision	Date	By	Chk

All dimensions to be verified on site, and the Architect informed of any discrepancy. All drawings and specifications should be read in conjunction with the Health and Safety Plan; all conflicts should be reported to the appointed Principal Designer.

House Type - 5B_A1

Lady Rona Delves Broughton
Doddington Estate Residential

Sheet Name: 5B_A1 Proposed Plans

Purpose of issue: Planning Status:

Date: 09/11/24 Checked by: TP

Drawn by: GB Scale @ A1: 1 : 50

Project No: 8877 Revision: P5

Drawing No 8877-BOW-5BA1-ZZ-DR-A-P500



Front View



Side View



Rear View

Note: Landscaping is shown for illustrative purposes to provide context for the house's surroundings

House Type - 5B_A1

Side View

P4	Submitted for Planning	31/10/24	GB	TP
P3	GIA Update	01/10/24	GB	TP
P2	Client Issue	26/09/24	GB	TP
P1	New Layout	11/09/24	GB	TP
	Revision	Date	By	Chk

Date: 09/11/24

Checked by: TP

Drawn by: GB

Scale @ A1:

All dimensions to be verified on site, and the Architect informed of any discrepancy. All drawings and specifications should be read in conjunction with the Health and Safety Plan; all conflicts should be reported to the appointed Principal Designer.
Do not scale from this drawing
This drawing is the copyright of Bowman Riley Architects Limited. ©

Sheet Name: 5B_A1 Proposed Visuals

Purpose of issue: Planning

Status:

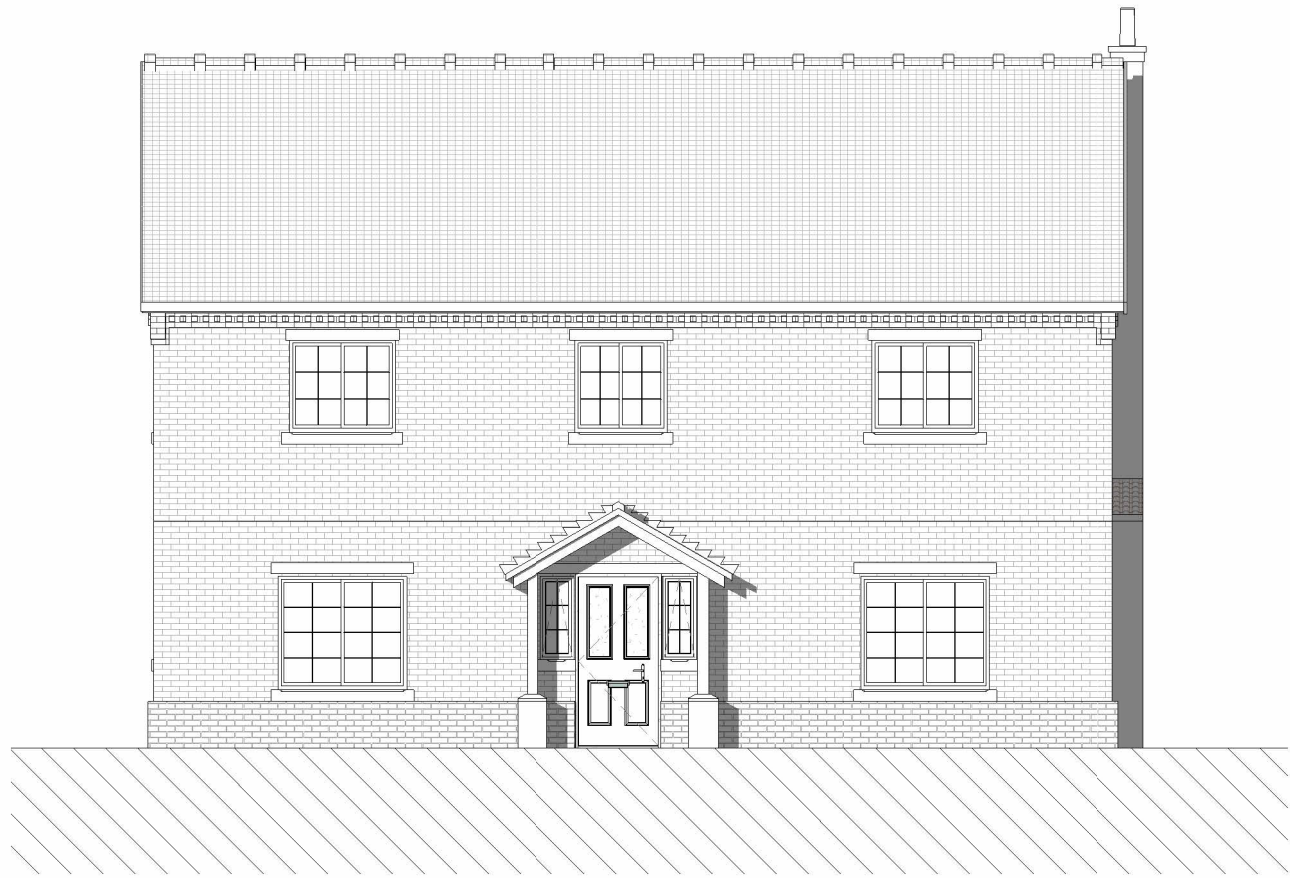
Lady Rona Delves Broughton
Doddington Estate Residential

Project No: 8877

Revision: P4

Drawing No 8877-BOW-5BA2-ZZ-DR-A-P501





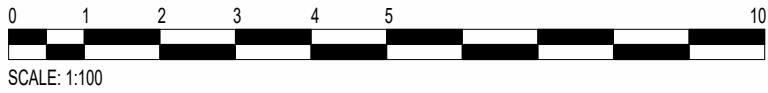
South
1 : 100



West
1 : 100



North
1 : 100



East
1 : 100

House Type - 5B_A2

					Date: 09/11/23		Checked by : TP		Sheet Name: 5B-A2 Proposed Elevations		Project No: 8877		Revision: P4	
					Drawn by: GB		Scale @ A2 : 1 : 100		Purpose of issue: Planning		Status:		Drawing No8877-BOW-5BA1-ZZ-DR-A-P300	
P4	Submitted for Planning		31/10/24	GB	TP	All dimensions to be verified on site, and the Architect informed of any discrepancy. All drawings and specifications should be read in conjunction with the Health and Safety Plan; all conflicts should be reported to the appointed Principal Designer.								
P3	GIA update		01/01/24	GB	TP									
P2	Client Issue		26/09/24	GB	TP									
P1	House Type Update		18/09/24	GB	TP									
Revision		Date	By	Chk	Do not scale from this drawing. This drawing is the copyright of Bowman Riley Architects Limited ©									

BOWMANRILEY

ARCHITECTS • BUILDING CONSULTANTS • INTERIORS

House Type - 5B_A2

Area Schedule (GIA)		
Name	Area	Level

GIA Ground Floor	94 m²	Level 00
GIA First Floor	94 m²	Level 01
GIA Second Floor	42 m²	Level 02

Grand total 230 m²

Area Schedule (GEA)		
Name	Area	Level

GEA Ground Floor	113 m²	Level 00
GEA 2nd Floor	50 m²	Level 02
GEA 1st Floor	113 m²	Level 01

Grand total 276 m²

Room Schedule	
Name	Area

Kitchen / Dining	29 m²
Living Room	21 m²
Home Office	9 m²
Entance Hall	12 m²
Snug	13 m²
Storage	1 m²
WC	2 m²
Storage	1 m²
Utility / Pantry	4 m²

Level 00: 9 91 m²

Bedroom 5	12 m²
Bedroom 4	15 m²
Bathroom	4 m²
Bedroom 3	14 m²
Bedroom 2	15 m²
Hallway	17 m²
Ensuite	3 m²
Storage	1 m²
Hallway	3 m²
Ensuite	4 m²

Level 01: 10 88 m²

His & Hers Ensuite	6 m²
Principal Bedroom	23 m²
Landing	7 m²

Level 02: 3 36 m²

Grand total: 22 215 m²

P4	Submitted for Planning	31/10/24	GB	TP
P3	GIA update	01/01/24	GB	TP
P2	Client Issue	26/09/24	GB	TP
P1	House Type Update	18/09/24	GB	TP

Revision	Date	By	Chk
All dimensions to be verified on site, and the Architect informed of any discrepancy. All drawings and specifications should be read in conjunction with the Health and Safety Plan; all conflicts should be reported to the appointed Principal Designer.			

Lady Rona Delves Broughton
Doddington Estate Residential

Sheet Name: 5B_A2 Proposed Plans

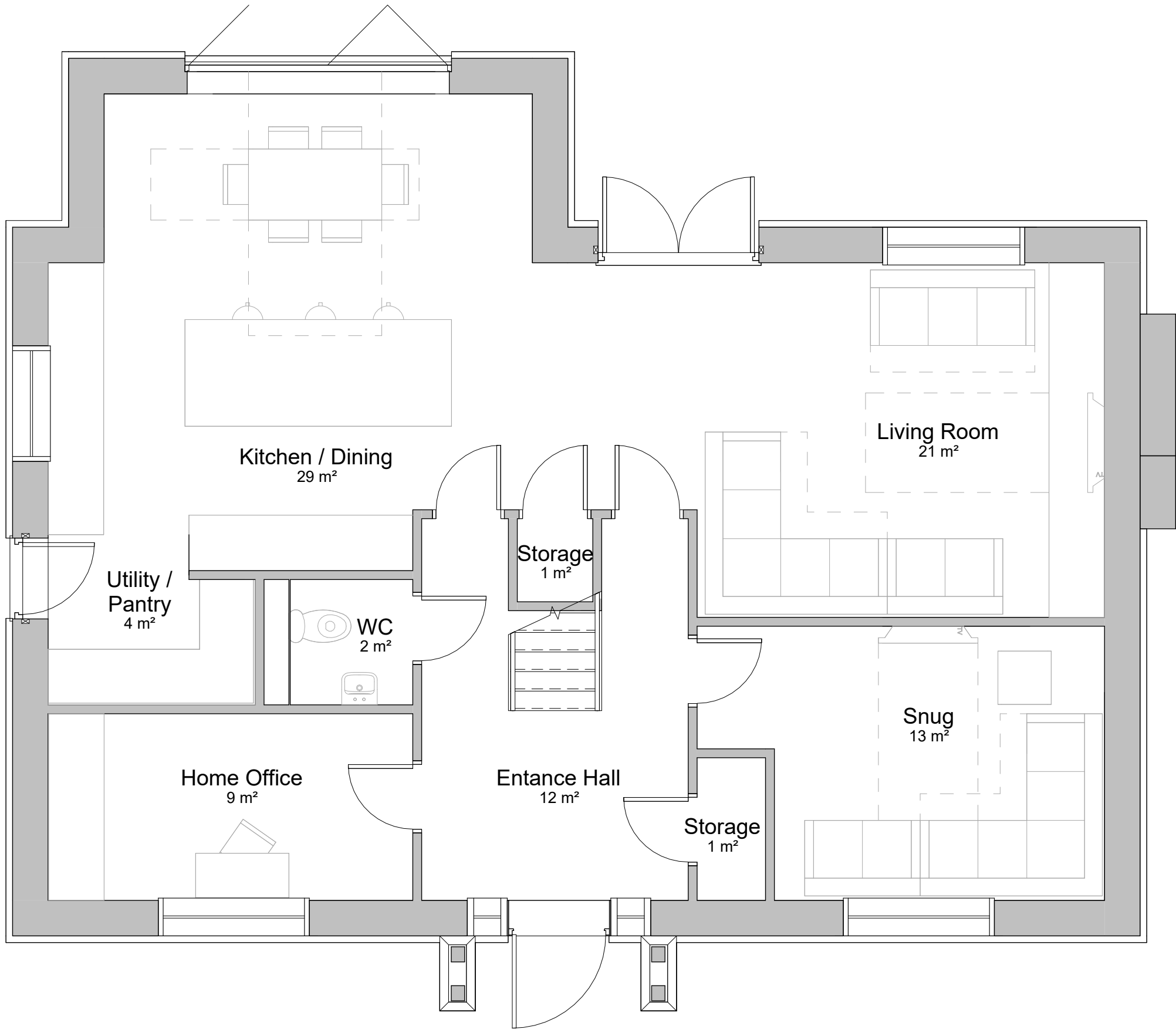
Purpose of issue: Planning Status:

Date: 09/11/23 Checked by: TP

Drawn by: GB Scale @ A1: 1 : 50

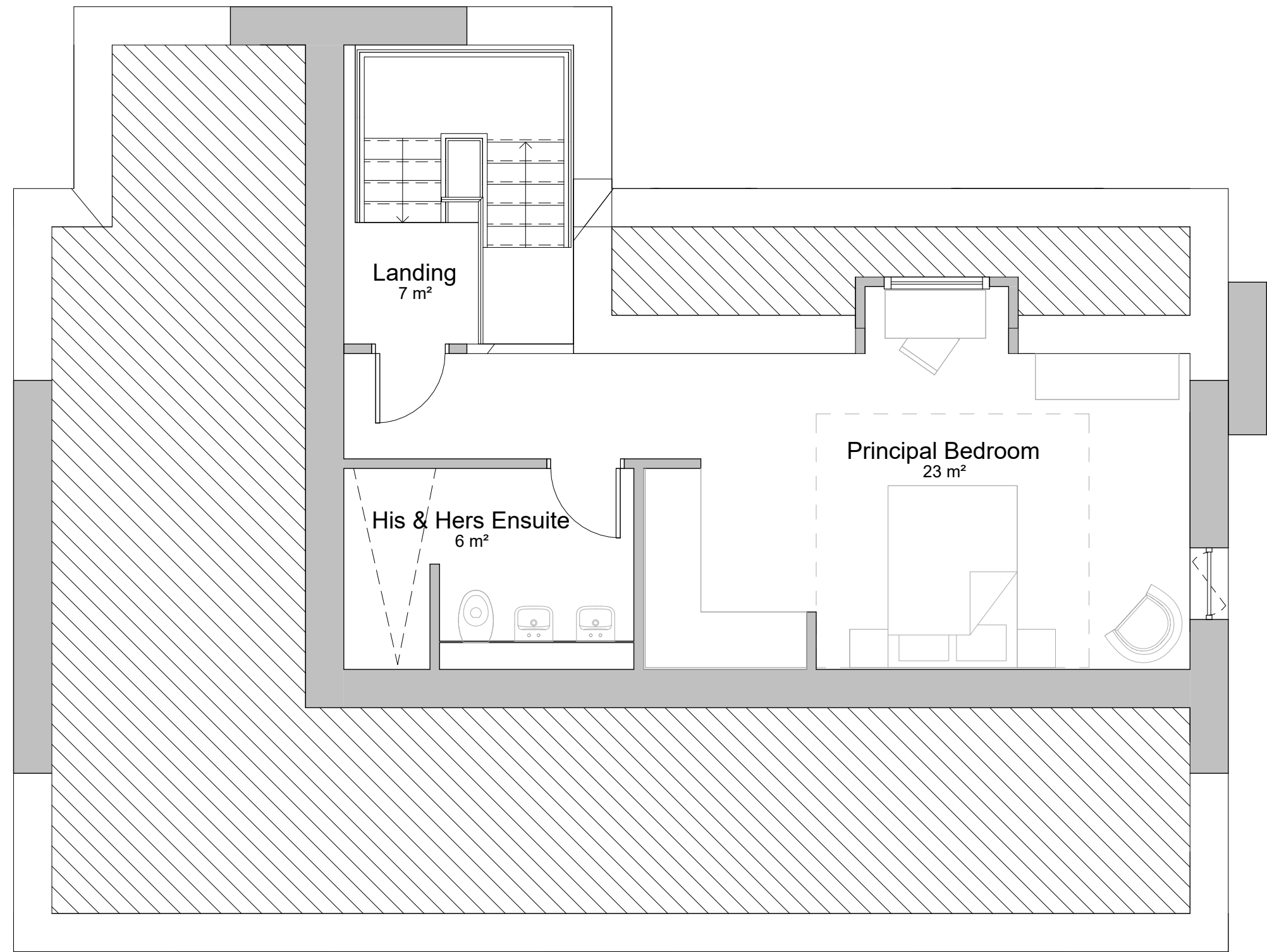
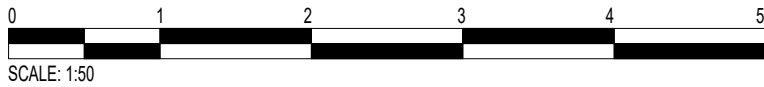
Project No: 8877 Revision: P4

Drawing No 8877-BOW-5BA1-ZZ-DR-A-P500



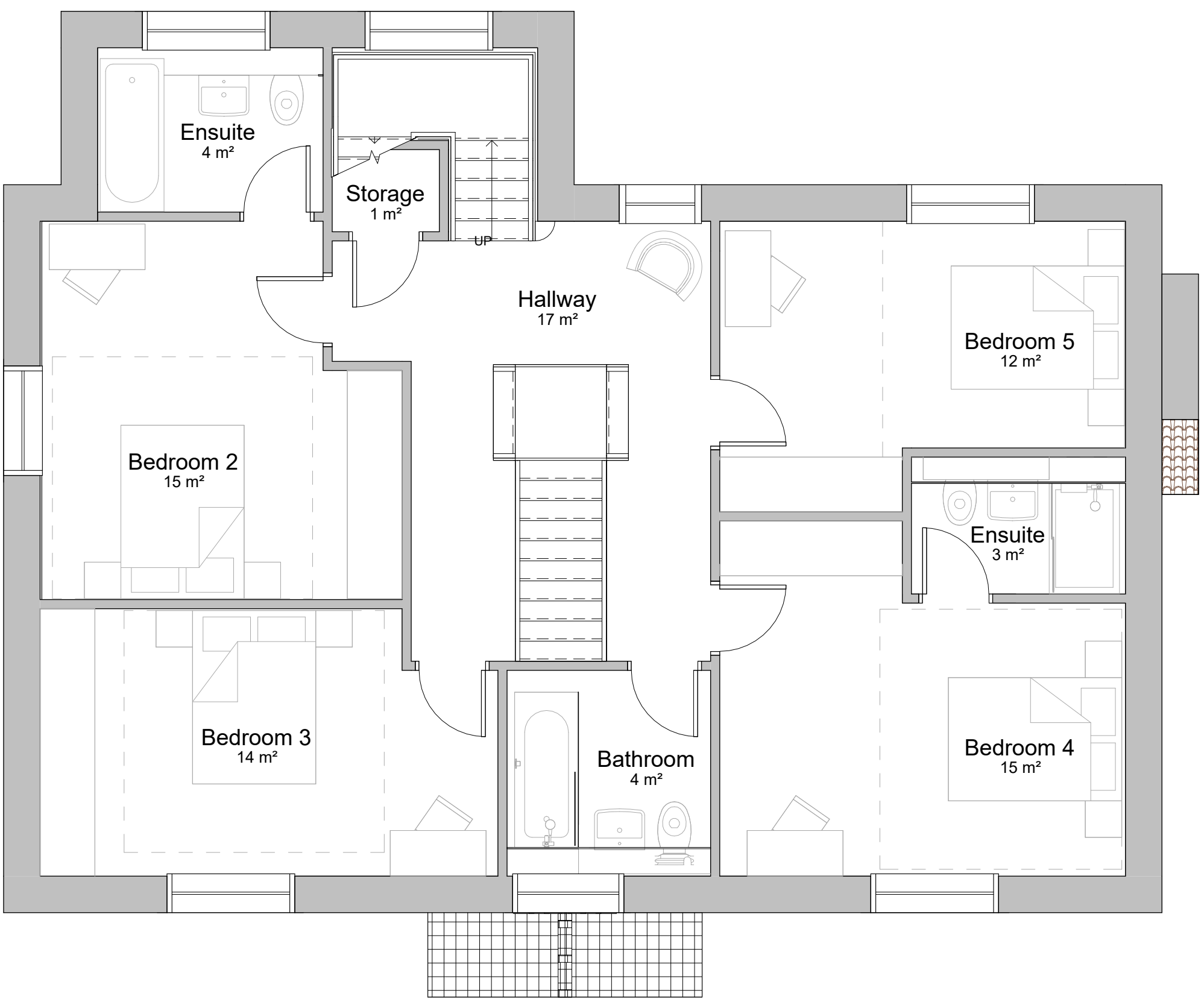
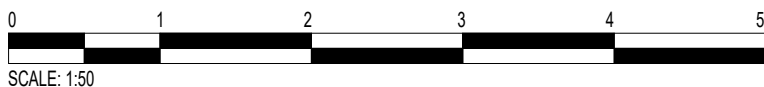
Proposed Ground Floor Plan

1 : 50



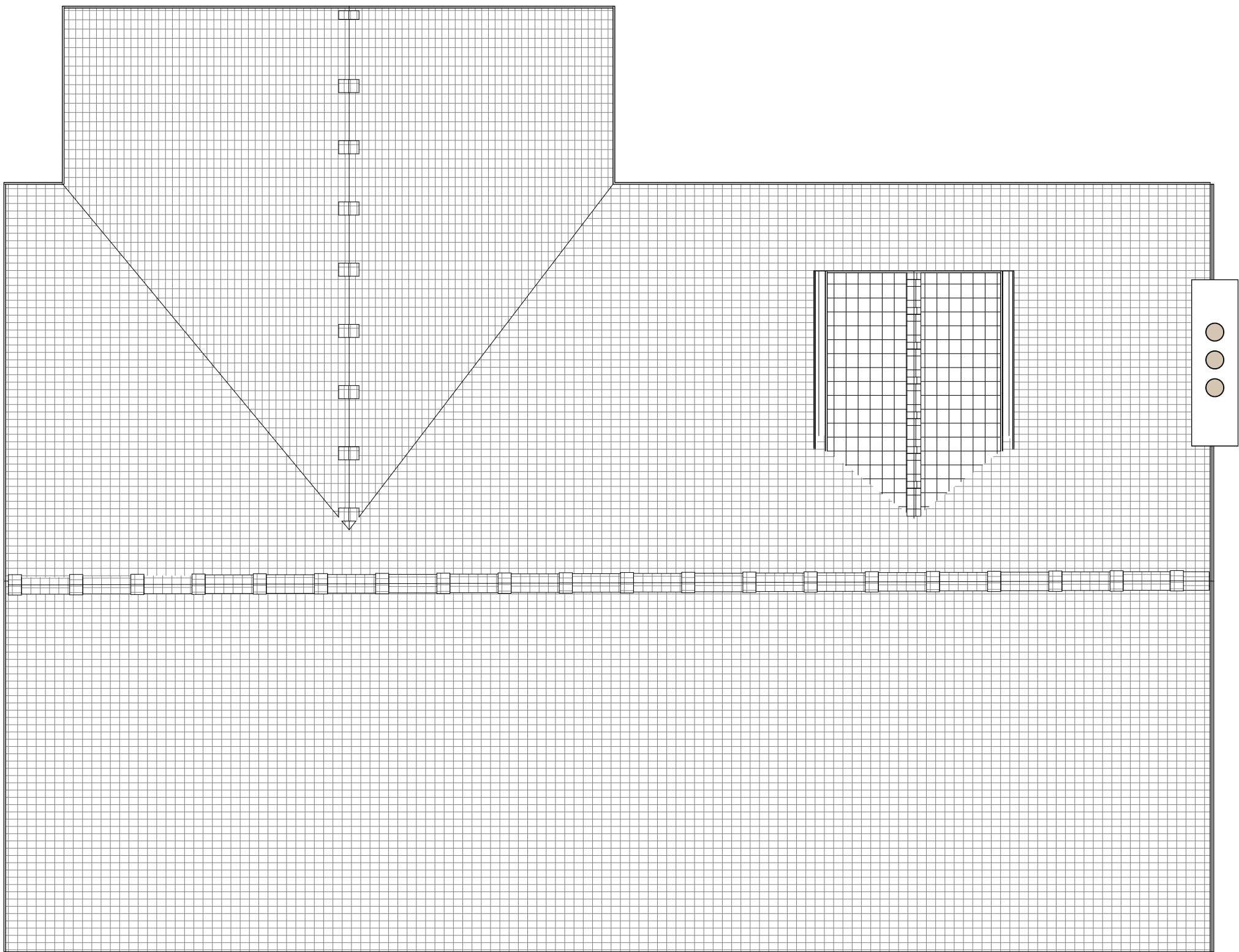
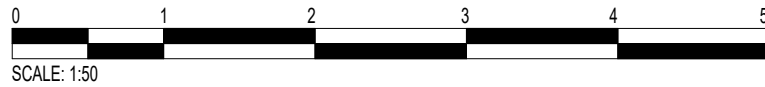
Proposed Second Floor Plan

1 : 50



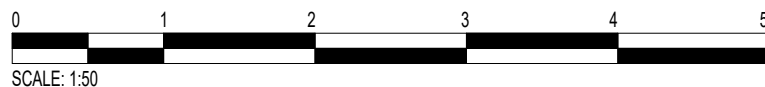
Proposed First Floor Plan

1 : 50



Proposed Roof Plan

1 : 50





Front View



Side View



Rear View

Note: Landscaping is shown for illustrative purposes to provide context for the house's surroundings

House Type - 5B_A2

Side View

Date: 09/11/23					Checked by: TP		Sheet Name: 5B_A2 Proposed Visuals		Project No: 8877		Revision: P4		
Drawn by: GB					Scale @ A1:		Purpose of issue: Planning		Status:		Drawing No 8877-BOW-5BA1-ZZ-DR-A-P501		
All dimensions to be verified on site, and the Architect informed of any discrepancy. All drawings and specifications should be read in conjunction with the Health and Safety Plan; all conflicts should be reported to the appointed Principal Designer.					Do not scale from this drawing		Lady Rona Delves Broughton		Doddington Estate Residential		<div><div>BOWMANRILEY</div><div>ARCHITECTS • BUILDING CONSULTANTS • INTERIORS</div></div>		
This drawing is the copyright of Bowman Riley Architects Limited. ©													
P4	Submitted for Planning	31/10/24	GB	TP									
P3	GIA update	01/01/24	GB	TP									
P2	Client Issue	26/09/24	GB	TP									
P1	House Type Update	18/09/24	GB	TP									
	Revision	Date	By	Chk									